



Zebra ZD411 Installation Guide



AVIMARK®

TABLE OF CONTENTS

- Overview..... 3
- Print Diagnostics 4
- Configure Printing Preferences..... 5
 - Configure the Printer Settings7
- Avimark Printer Setup..... 9
 - Drug Labels9

ZEBRA ZD411 LABEL PRINTER

Overview

This guide will provide the steps for installation of the Zebra ZD411 printer for Avimark.

Zebra Installation

1. Click the link to go to the Zebra website for installation files: <https://www.zebra.com/us/en/support-downloads/printers/desktop/zd411.html>.
2. Expand the **Drivers** category.
3. Download and install the **ZD411 Driver**.
4. Download and install the **Zebra Printer Setup Utilities**.

- DRIVERS

If you had connected your printer to the computer via USB prior to driver installation, [follow these recovery steps](#) before printer driver installation.

ZD411 DRIVERS - RECOMMENDED

Windows Printer Driver v8
Version 8.6.5.26125
This is the recommended driver to use with your printer.
'ZDesigner Printer Driver' is for use with **ZebraDesigner 3** and other Windows applications.
OPERATING SYSTEM versions: Windows 10/11, Windows Server 2016/2019/2022 (see Release Notes for details)
[How To Install Printer Driver V8 >](#)
[View Release Notes >](#)

[Download 28 MB](#)

PRINTER CONFIGURATION UTILITY

Zebra Printer Setup Utilities
Version 11.9.1297
Use this software to configure your printer after Printer Driver installation.
OPERATING SYSTEM versions: Windows 10/11, Windows Server 2016/2019/2022 (see Release Notes for details)
[How To Configure Printer Settings With Zebra Setup Utilities >](#)
[View Release Notes >](#)

[Download 12 MB](#)

Print Diagnostics

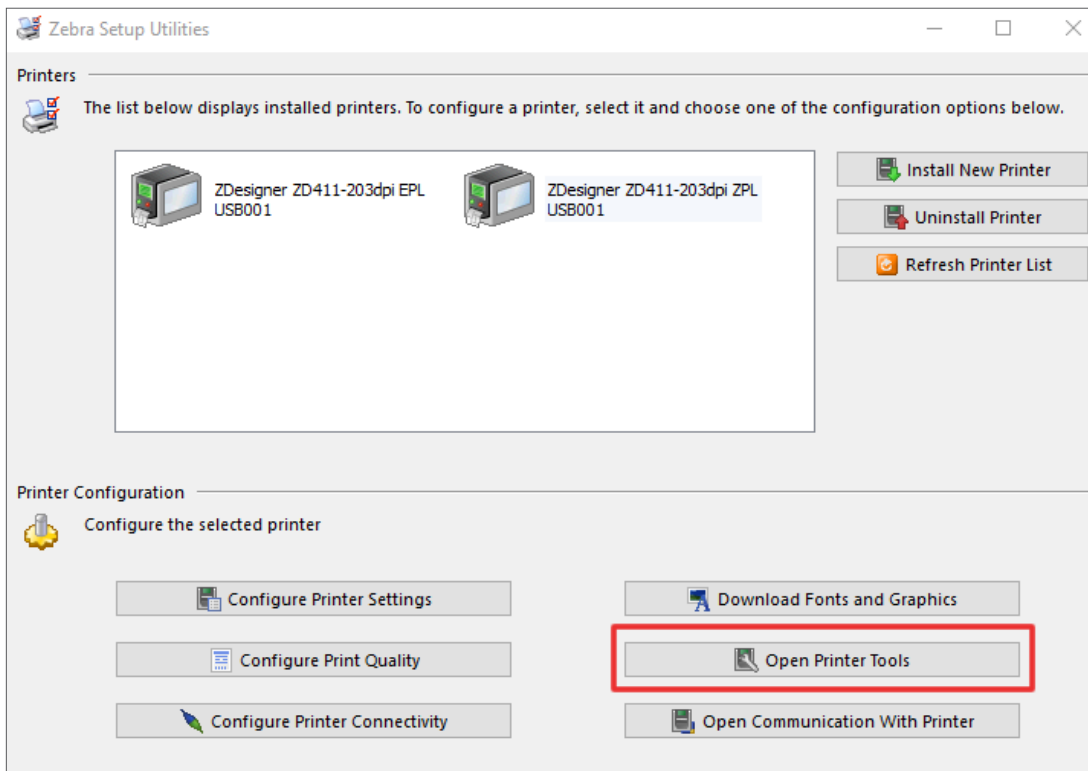
BEFORE you plug in the printer, print the diagnostics.

1. With the printer **off**, hold down the cancel button (X) and power button until you see the ready button light turn yellow. *The ready light is the square with the diamond on it.*
2. Make sure the media is loaded and the printer cover is closed.
3. There are two choices to print the report:
 - ◇ If printer power is **OFF**, press and hold the **Cancel** button while turning the printer power **ON**.
 - ◇ If printer power is **ON**, press **Feed + Cancel** buttons for **two** seconds.
4. The **Printer and Network Configuration Reports** will print and the printer returns to **Ready** status.
5. Plug the **USB** cord from the printer into the computer. It should auto-install.
6. Open the **Control Panel > Devices and Printers**.
7. **Right-click** on the printer and select **Printer Properties > click on Print Test Page**. A single label with the printer image should print.

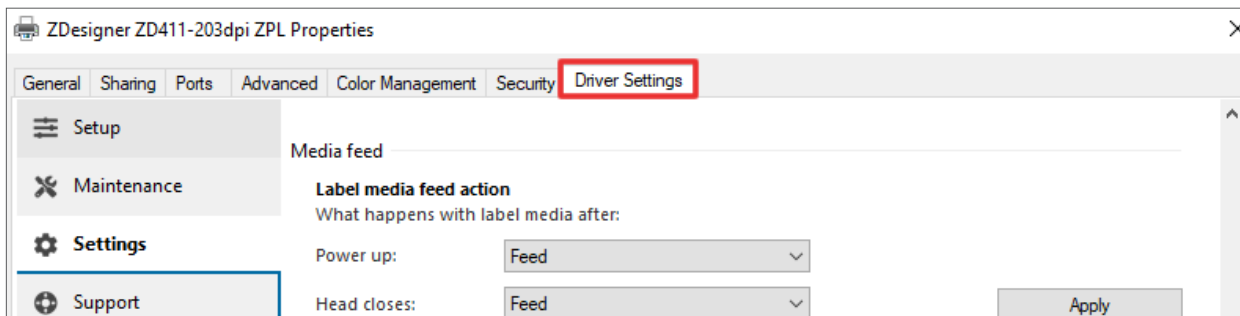
Configure Printing Preferences

If the steps above work, continue with setting up printing preferences.

1. Open **Zebra Setup Utilities**, select the correct printer, then click on **Open Printer Tools**.

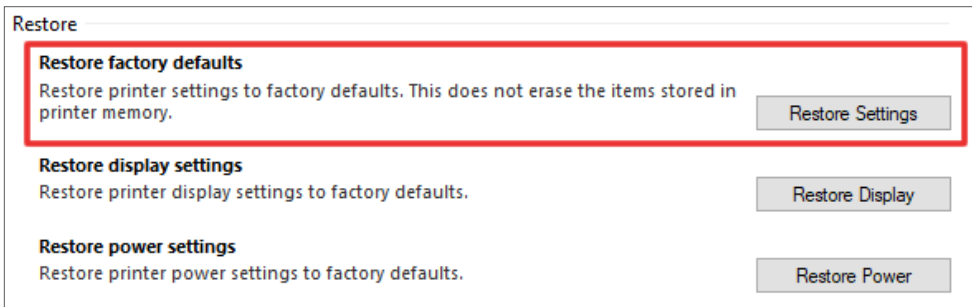


This can also be done from **Devices and Printers > right-click > Printer Properties > click on the Driver Settings** tab.

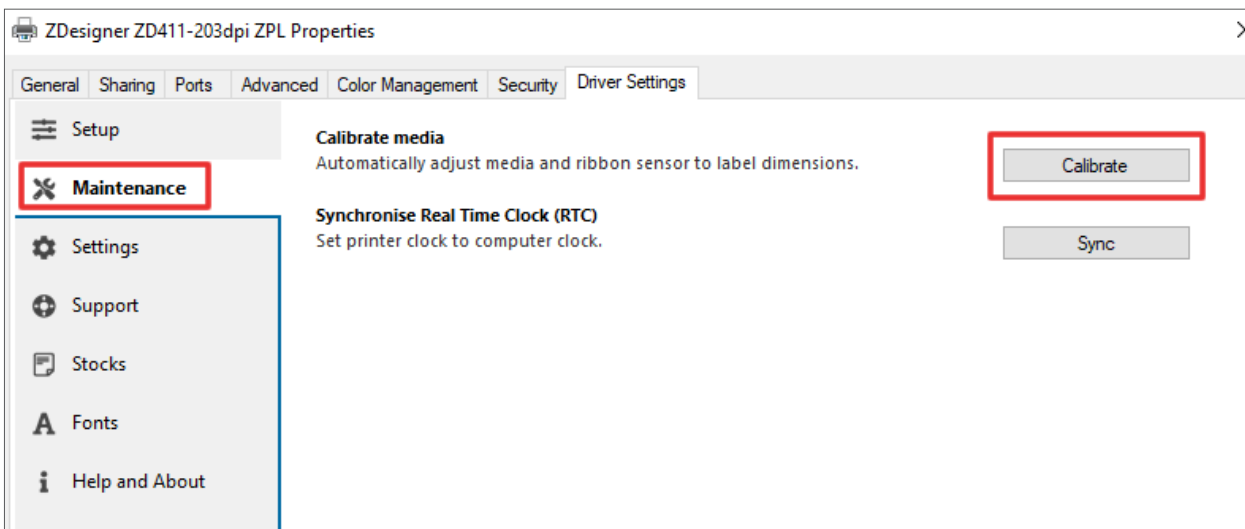


ZEBRA ZD411 LABEL PRINTER

2. In ZDesigner, verify the **Driver Settings** tab is selected. Perform the following in order:
 - ◆ **Settings > Restore factory defaults > Restore Settings.** This will print two labels and restore printer settings to factory defaults.



- ◆ **Maintenance > Calibrate Media > Calibrate.** This will print out two to five labels to re-measure the size of the label and confirm their length.

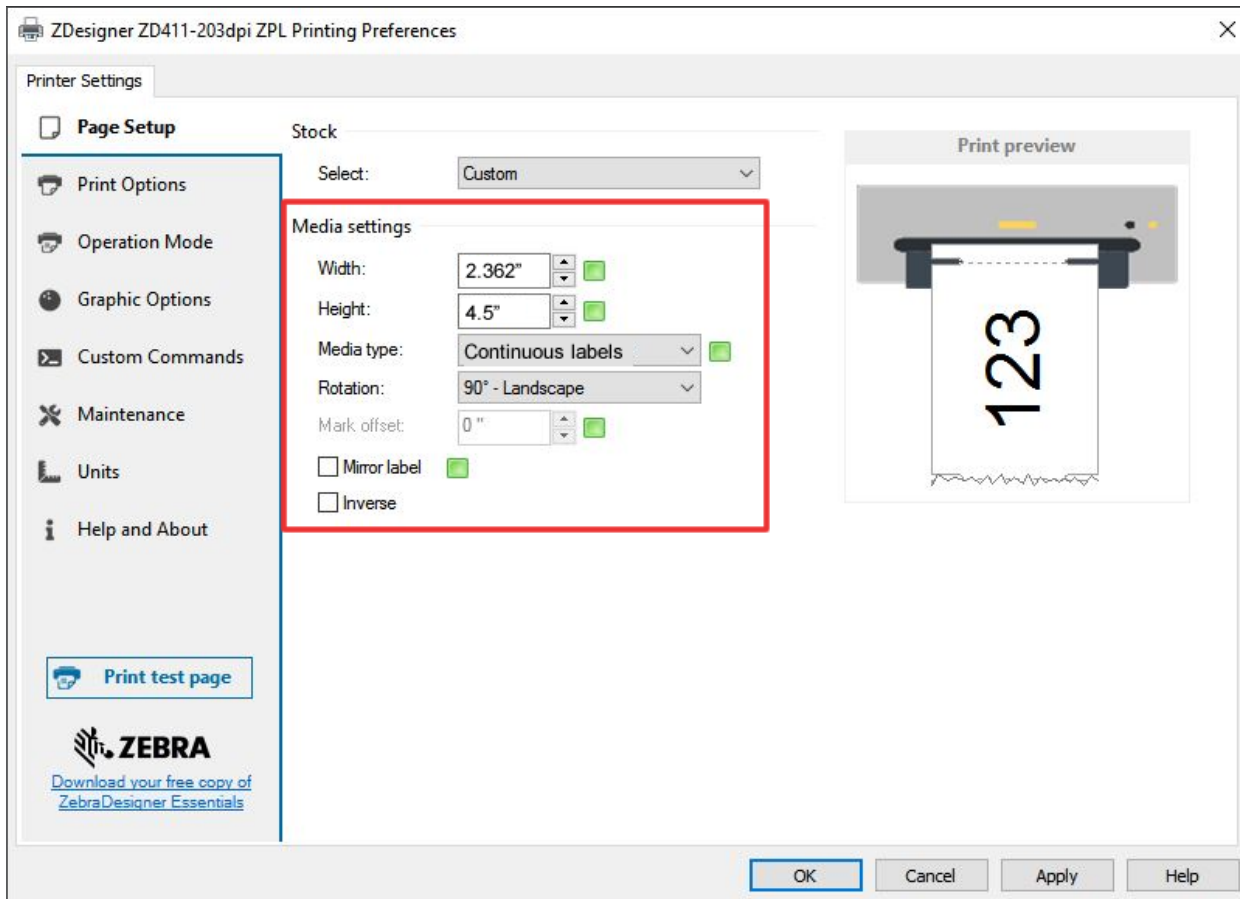


3. Verify you see your ZDesigner ZD411-203dpi ZPL printer listed under **Control Panel > Devices and Printers.**

ZEBRA ZD411 LABEL PRINTER

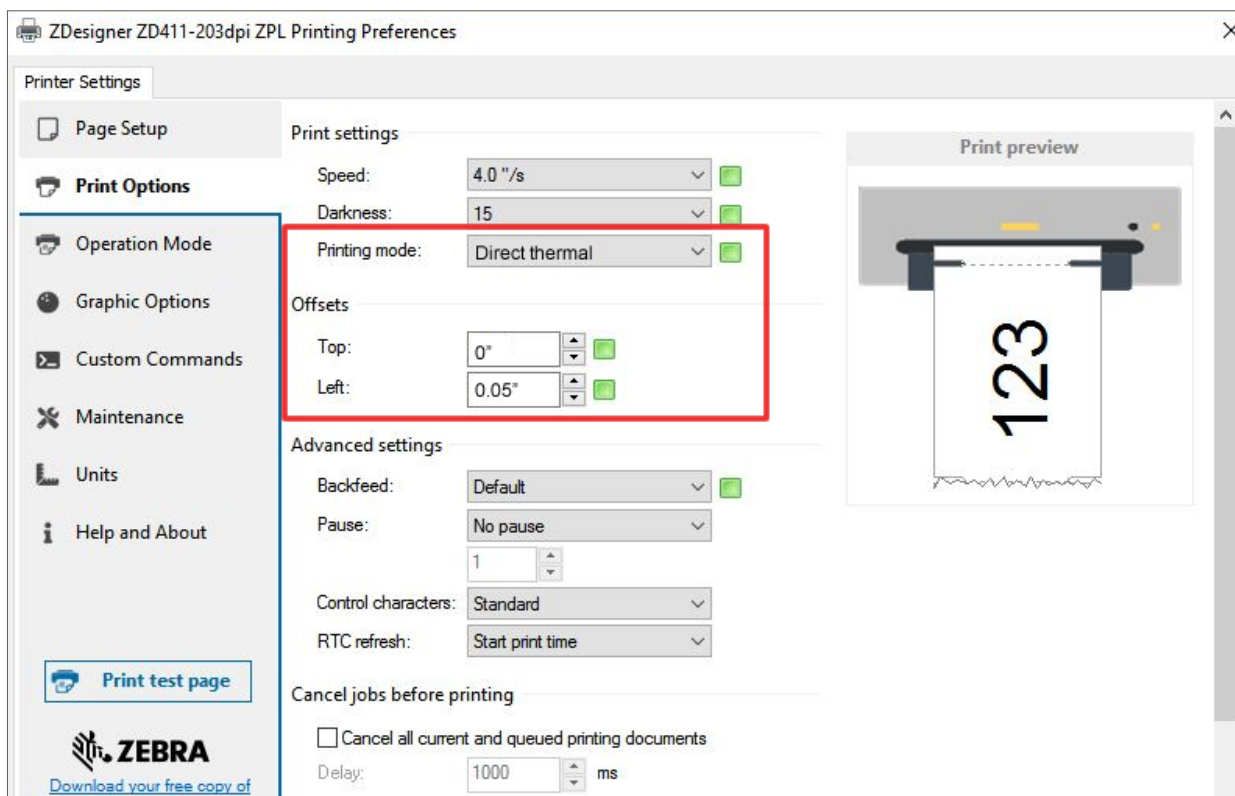
Configure the Printer Settings

1. On the Zebra printer, **right-click** > **Printing Preferences**.
2. On the **Page Setup** tab, set the **Width**, **Height**, **Media type**, **Rotation** for your label.



ZEBRA ZD411 LABEL PRINTER

3. On the **Print Options** tab, set the correct **Printing mode** and **Offsets Top** and **Left**.




Avimark Printer Setup

1. Close and re-open Avimark.
2. In Avimark, go to **Utilities > Printer Setup**.
3. On the **Printers** tab, set **Drug Labels** and **Other Labels** to **ZDesigner ZD4110203dpi ZPL**.
4. Set **Quality** to **Label Printer**.
5. Click on the **Form Assignment** tab. The ZD411 printer will be listed. The Form Assignment can be left as **Custom**.

Drug Labels

The dimensions tested for drug labels were based on labels 3 (height) x 2 (width).

1. In Avimark, go to **Work with > Hospital Setup > Advanced > Advanced Options** (.
2. Search for **drug labels**.
3. Under **Printing**, change the following default values.
Font Size = 8
Label Height = 2.75
Label Width = 2.15
Left Margin = 0.10
Top Margin = 0.10