



IDEXX VetLab[®] Station

VERSION 2018 AND HIGHER



AVIMARK[®]

TABLE OF CONTENTS

- Overview..... 3**
- IDEXX Setup..... 3**
- AVImark Setup..... 3**
 - Installing the IVLS Proxy as Traditional.....4
 - Verifying the IVLS Communication Status.....5
 - Install the IVLS Proxy as a Windows Service5
 - Ability to Use Multiple IVLS Devices on Same Network (Site Users).....6
- AVImark Treatment List Associations 7**
 - Create Associations to Existing AVImark Treatments7
- Creating Requisitions 8**
 - View Lab Results9
 - Download PDF Result Files from IVLS9

IDEXX VETLAB STATION (BI-DIRECTIONAL)

Overview

A fee schedule will apply for new advanced integrations in order to control the costs of general technical support. Covetrus® will charge a separate setup, support, and license fee for advanced integrations such as the IDEXX VetLab Station (IVLS) Bi-Directional Installation. Contact **Covetrus Sales** at **855.838.7638** for pricing information.

Using two-way integration technology, the IVLS provides the following benefits: eliminates manual data entry, every charge is captured, records results into the patient record.

IDEXX Setup

The IVLS will first need to be on Version 3.02 or higher and connected to the clinic network to allow communication between the AVImark and IDEXX software. Contact IDEXX for assistance with this setup at 800-248-2483.

AVImark Setup

In order to communicate tests and retrieve results from the IVLS into AVImark, the IVLS gets installed on the **AVImark Server** with the correct IDEXX Client license file and IDEXXClient.ocx file registered.

The **Server** computer **MUST** have a Static IP Address – please speak with your Network Administrator about establishing a Static IP Address. Stay up to date with all Windows® updates. The Server **MUST** be restarted periodically – most clients opt for at least once weekly or every few days.

Add the following Exceptions to the Windows Firewall and any other security you are using: AVImark.exe, Ports 45599, 45505 and 45500.

To establish the Firewall Settings:

1. Open Windows **Control Panel** > **Windows Defender Firewall** > **Advanced Settings** (the link is on the left).
2. Select **Inbound Rules** from the left pane.
3. Select **New Rule** under Actions in the right pane.
4. Select **Port** then click **Next**.
5. In the **Specific local ports** field enter **45599, 45505, 45500**. Click **Next**.

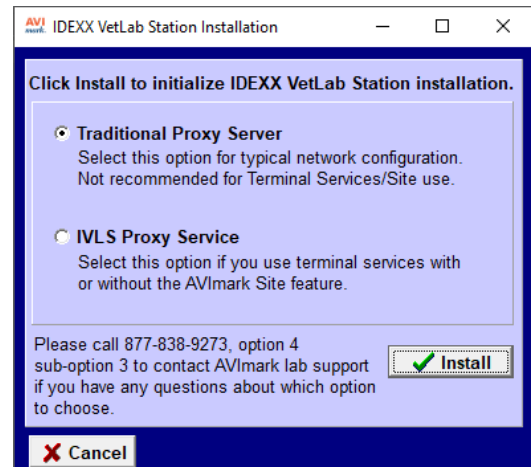
IDEXX VETLAB STATION (BI-DIRECTIONAL)

6. Click **Next** again.
7. Leave **Domain**, **Private**, and **Public** all checked. Click **Next**.
8. Enter a name for this new rule, such as **IVLS Ports**, and click **Finish**.

Repeat the step for AVImark.exe selecting **Program** rather than Port (step 4) in the New Inbound Rule Wizard window.

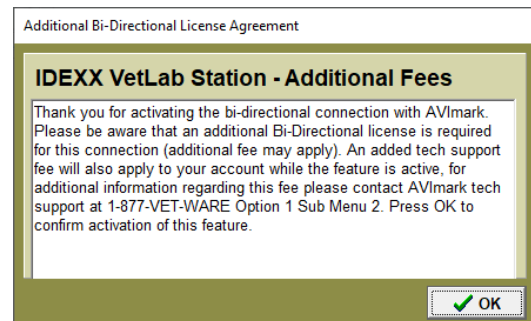
Installing the IVLS Proxy as Traditional

1. Open AVImark on the Server to communicate with the IVLS. (This will be formally referred to as the **Proxy Server**.)
2. On the AVImark shortcut icon, **right-click > Run as Administrator**.
3. From the CID menu, perform the **Utilities > Utilities > installivls** step.
4. You will be prompted for a backup. Click **No** to this prompt.
5. Click **Install**. This will install the C++ software needed for communication and register the .OCX file on this computer.



The Instrument Management settings necessary in AVImark can now be made:

1. From the CID menu, select **Services > Instrument Management**.
2. **Right-click > New**.
3. Choose **IDEXX VetLab Station**.
4. Click **Next**.
5. Click **Finish**.
6. Read the license agreement prompt. Click **OK**.
7. Click **Done** to close the Instrument Management window.



IDEXX VETLAB STATION (BI-DIRECTIONAL)

Verifying the IVLS Communication Status

Once the Proxy information is established and AVImark is reopened on the AVImark Server, a new icon will appear in the System Tray of the Proxy computer, labeled IDEXX VetLab Station Proxy.



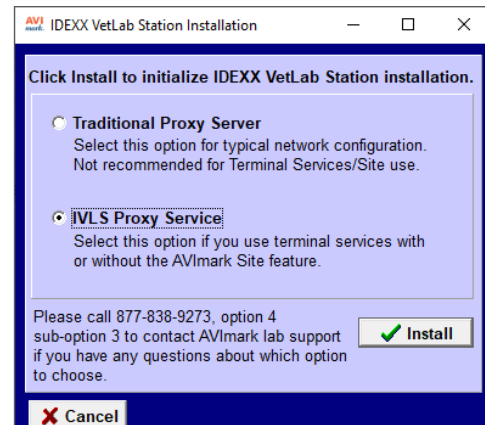
1. Right-click on the IDEXX VetLab Station Proxy icon and select **Communication Status**.
2. Click on the **Server** tab.

When the connection has been established it will fill in the information for the ID, Number of IVLS Connections, Name, and IP address.



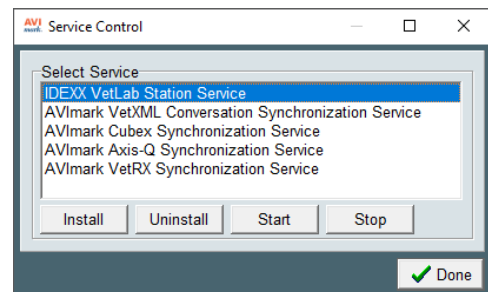
Install the IVLS Proxy as a Windows Service

1. After the connection has been established, right-click on the IDEXX VetLab Station Proxy icon.
2. Uncheck **Open on AVImark Startup**.
3. Right-click the icon again and click on **Close**. Then proceed with the install.
 - a. Select **Utilities > Utilities**.
 - b. Type **installivls**, click **OK**.
 - c. Select **IVLS Proxy Service**.
 - d. Click **Install**.



An alternate installation process for the Windows service can be found from the CID menu.

1. Hold down the **Ctrl + Shift** keys > **Utilities > Service Control**.
2. Select **IDEXX VetLab Station Service**. Click the **Install** button to begin the installation of the Windows service.
3. Click the **Install** button to begin the installation of the Windows service.



IDEXX VETLAB STATION (BI-DIRECTIONAL)

Once installation is complete, you will be prompted with the option to start the service. Starting it will allow the service to begin running. If at any time exclusive AVImark file usage is required (rebuilding Indexes, backing up, restoring, etc.) you can launch the same window to stop the service allowing the selected process to run. Once completed, you can again start the service.

Ability to Use Multiple IVLS Devices on Same Network (Site Users)

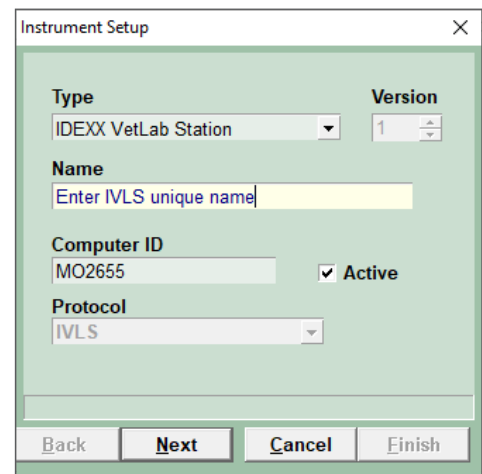
We have improved the Instrument Management in AVImark to allow users to connect and communicate with multiple IVLS devices at their clinic. To add additional IVLS instruments for use with AVImark follow the steps below:

1. From the CID menu, select **Services > Instrument Management**.
2. **Right-click > New**.
3. Select **IDEXX VetLab Station** as the **Type**.
4. Enter the unique **Name** of the IVLS being added.

Each instrument **MUST** have **unique names**.

The Instrument Name can be found on the IVLS by following the steps below:

1. **Settings > Practice Management > Configure**.
2. Press **Next**.
3. Select the Site for which this IVLS will be used.
4. Click **Finish**.



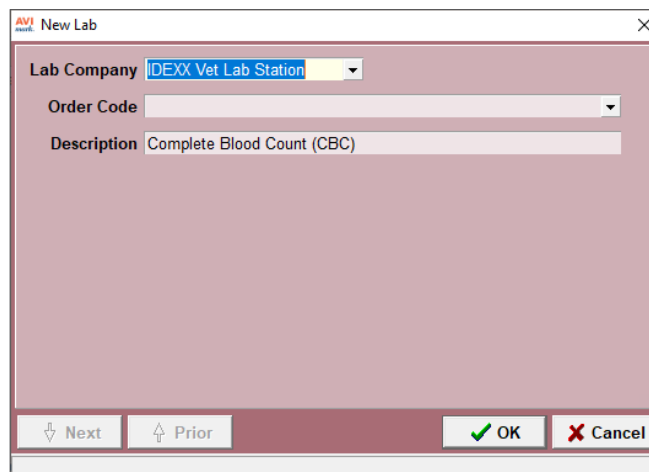
The screenshot shows the 'Instrument Setup' dialog box. It has a title bar with 'Instrument Setup' and a close button. The dialog is divided into several sections. The 'Type' section has a dropdown menu with 'IDEXX VetLab Station' selected. The 'Version' section has a spinner box with '1' selected. The 'Name' section has a text input field with the placeholder text 'Enter IVLS unique name'. The 'Computer ID' section has a text input field with 'MO2655' entered and a checked 'Active' checkbox. The 'Protocol' section has a dropdown menu with 'IVLS' selected. At the bottom, there are four buttons: 'Back', 'Next', 'Cancel', and 'Finish'.

AVImark Treatment List Associations

A new table named **IDEXX VLS Code** has been created in **System Tables**. This new table will hold the IDEXX test codes that will be used in the AVImark Treatment List to make the association between the selected AVImark treatment and IDEXX test. Although this is a pre-defined list, it can be modified to add or change treatments.

Create Associations to Existing AVImark Treatments

1. From the CID menu, click on **Work with > Treatment List**.
2. Locate the treatment code to modify.
3. **Right-click > Change**.
4. Select the **Laboratory** sub tab, then the **Labs** tab.
5. **Right-click > New** to open the New Lab window.
6. Select the **Lab Company** (IDEXX Vet Lab Station)



7. Select the proper order code from the **Order Code** drop-down list, and the **Description** should be automatically imported into this field.
8. Click **OK** to save.

Creating Requisitions

Generating requisitions can be accomplished from more than one area.

From the Patient or Medical History Area

1. **Right-click > Create Requisition** to display the Create Requisition window where you can make a test requisition for the patient you have selected on the AVImark CID.
2. Select **IDEXX Vet Lab Station** as the **Lab Company**.
3. Highlight the desired test from the list provided, and press the **spacebar** to make the selection(s).
4. Selected test(s) will be added to Medical History along with a new entry that represents the requisition and automatically send the test requisition to the **Pending** tab of the IVLS computer.
5. The new entry will have a pre-defined code of **IVLS** and a description of **Requisition** with a series of numbers. The numbers in the description will be a combination of the AVImark patient ID followed by an automatically assigned sequential number identifying the requisition. This requisition number will allow the automatic import of results to the proper Medical History entry.

Medical History						
Date	Time	Dr.	Type	Code	Description	Qty Amount
09-02-YY	11:49a		S	IVLS	Requisition 3063-23064	1 0.00

6. This entry will be the entry that will receive the imported test results.
7. You will now be able to view that patient as well as their requested tests, on the **Pending** tab of the IVLS computer. This indicates that the test is queued and awaiting processing.
8. Process the test on the appropriate analyzers.

In Medical History

Requisitions can also be created by entering an AVImark treatment into Medical History that has been set up with the IDEXX IVLS Lab Company and Order Code. When the properly set up treatment is added to Medical History, the requisition information is automatically transmitted to the IVLS Pending tab queued for processing.


IDEXX VETLAB STATION (BI-DIRECTIONAL)

View Lab Results

Once tests are completed on the selected analyzers, the transfer of results into AVImark will be automatic.

- A limited preview of the results can be visible directly from the Medical History entry in a format similar to the Medical History notes display. However, if you do not want these to be visible at all times, you can turn off the view by right-clicking from Medical History, selecting IDEXX IVLS > Display Results on CID and deselecting the option. This will allow you to toggle on and off the results from being immediately visible on the CID. The results will still be attached using the Tests integration.
- You can access the new Tests attachment to view or manually import results by selecting **Tests** in the Medical History **Attachments** area. This will open the Tests window. From this window you can view and print attached results, or import new results.
- The results will be received in any value or type and with any notes or comments as they are sent from the lab/instrument. They will also display the normal range as dictated by the lab or instrument at the time the test was completed.
- The results will be permanently associated to this AVImark Medical History entry.

Download PDF Result Files from IVLS

We have added the ability to download PDF files from the IDEXX VetLab Station when results are loaded into AVImark. The PDF files will be stored in the same directory as the AVImark Attachments. This path can be viewed in Options Maintenance by clicking  on the speed bar then type **Attachment** in the Search field then highlight **Directory**. To the right is a sample pdf.

