

AVImark ReadMe Version 2011.0.1

1. DragonflyPACS
2. Account Locking
3. Note Annotations
4. New Follow Up Security
5. X-Charge
6. Patient Record Merge Word
7. Searching for Patient Relations
8. ASAP Report for Alabama
9. First Nations Tax – Canada
10. 2011.0.1 Fixes List

DragonflyPACS

We are pleased to bring you our new DragonflyPACS image processing system! DragonflyPACS is integrated with the AVImark veterinary software, allowing veterinarians to request, receive, view and store images within AVImark's Client Information Display (CID), while automatically capturing charges and passing them on to clients.

Dragonfly is a DICOM 3.2 compliant DICOM PACS Server/Worklist/Viewer bundle developed by O&R Technology (<http://www.or-technology.com/>) and distributed exclusively for NA veterinary purposes by McAllister Software.

Dragonfly (dicomPACS® 5) is in conformance with the Digital Imaging and Communications in Medicine standard (DICOM) and is conformant with the recommended format as described in **PS 3.2** of the DICOM standard (**Digital Imaging and Communications in Medicine (DICOM), NEMA PS 3.1-15, 2000.**).

Apart from the referenced DICOM version 2000, Dragonfly (O&R) uses the latest information from: <http://medical.nema.org/>
<ftp://medical.nema.org/medical/dicom/2009/>

Dragonfly Hardware Requirements (Minimum)

The Dragonfly database will work on 32 and 64 bit platforms. Server requirements should take into consideration Microsoft SQL requirements.

Workstation requirements:

- Processor: Intel Core Duo/Core 2 Duo or comparable AMD Dual Core Processor with more than 2 GH. The application will benefit from four or multi-core-processors.
- RAM: minimum 1GB RAM for the dicomPACS Viewer.
For diagnostic and slices: 2GB RAM for the dicomPACS® Viewer.
- Hard Disk: 80 GB hard disk min.
- CD/DVD drive (if burning a CD)
- Network Card: 100 MB
- Graphics card: Resolution of at least 1,280 x 1,024 pixels in the True Color mode;
For diagnosing, special graphics cards must be used, depending on the resolution of the diagnosis monitor.

AVImark Setup

Advanced Option Setup

Open AVImark's Hospital Advanced Options to view options pertaining to the DragonflyPACS feature.

- In the **Search** field type **dragonfly**. You will be presented with the following options:
- **Active**: Setting this to **True** will activate the feature when appropriate licensing is present.
- **Computer GUID to Monitor Dragonfly PACS Request Status** will be set automatically by using the **Set Dragonfly Watch Computer** menu found in the **Utilities** menu. More information below.
- **Dragonfly Local PACS Program Path** will default to being assigned with this typical setting: c:\dicom PACS.

- **Dragonfly Network PACS Program Path** option will default to being assigned with a typical setting of: N:\dicomPACS.
- **Dragonfly PACS Imported Shots Treatment Code** is an AVImark treatment code used when importing previously “Archived” images. The AVImark code assigned to this entry cannot contain any pre-defined DICOM entries and should be set up in your AVImark Treatment List.
- **Dragonfly Miscellaneous Shot Treatment Code** will be used for instances where there were more images captured than originally requested. This code will be added to the Medical History with a quantity reflecting the number of additional images and should be set up in your AVImark Treatment List.
- **Dragonfly PACS Server** will be the path to your Dragonfly PACS server. This should typically be an IP address and program path. For example: 123.45.6.78\dicomPACS
- Should the option **If writing to a CD, Dragonfly requires that the software program Nero (version 8 or above) installed on the workstation** be set to **Prompt** this message will appear. Setting the option to **OK**, will not display the warning.
- **Location of BDT2Pacs.exe File** is typically c:\BDT.
- **Minutes Between Status Checks** is used to define the number of minutes between status checks performed by the Dragonfly Watch Computer.
- **SQL Database** should typically be set to AVImark.
- **Wait Seconds After Starting Up Dragonfly PACS** is an option used to launch Dragonfly automatically if a command requiring Dragonfly is issued, and Dragonfly is not running. It usually takes a few seconds or more for Dragonfly to load. This is the number of seconds to wait before continuing with the request (if we had to start Dragonfly).

Modality Setup

- From the AVImark CID select **Work With, DICOM Modalities** to open the DICOM Modalities area where you can begin setting up your modality lists.
- In the left pane, you will see a list of current DICOM modality types. To begin adding modality types first select the appropriate **Modality category** from the left pane.
- Under the right pane area select **right-click New** or press **F2** to add a new modality. You will be presented with the Enter DICOM Modality window with three tabs.
 - The **Modality** tab contains the following fields:
 - **AE Title** (Application Entity) – The value found in the Modality AE Title (SCU) field.
 - **Description** – User defined description for reference.
 - **Ini Section** – This is a uniquely named Reference only section used to store description information within a configuration file.
 - **Type Code** – Represents the Modality Type.
 - **Plan Codes** tab:
 - Using **F2, right-click New**, or the **Add** button begin adding the valid plan codes this modality is configured to support.
 - You should enter the **Code** and a **Shot Description**. This should match the information available in the modality.
 - We have incorporated the ability to import a Plan Code list, if one is provided with your modality. To use this import feature, the Plan Code list must be an ASCII Tab delimited file containing two columns (plan code and plan description).
 - **Right-click** in the Plan tab, select **Import Codes from File** and select the desired list file to import your plan code list file.

- **Notes tab:**
A Notes tab has been provided to enter any general purpose information related to this modality.
- Saving this entry will create a section for this modality in the BDT2PACS.ini file.
- To update your BDT2PACS.ini file after any additions or modifications to your Modality List, select **Write to the BDT2PACS Configuration File**. From the DICOM Modality Maintenance window select **Edit, Rewrite the BDT2PACS Configuration File**.

AVImark Treatment Setup

Designated AVImark treatments will need to be set up to generate shot requests. You can create new treatments, or add DICOM request information to existing treatments.

- Open either a **New** or **Change Treatment** window.
- Select the **Laboratory** tab, then **Radiograph** sub-tab.
- Open the new Radiography window by using **right-click New** or pressing **F2**.
- Select **Dragonfly** from the **Radiograph Source** drop-down.
- Select the **AE Title** by using the **ellipses**.
- Once the AE Title has been set, you will be presented with the list of choices for Shot Descriptions based on the list of Plan Codes you have entered for this Modality.
- When the Shot Description has been selected, the corresponding Plan Code will automatically be entered.

****Note:** if you change your AE Title, the Shot Description and Plan Code will be removed, as they will no longer be valid. A new Shot Description and Plan Code should be selected if the AE Title has changed.

As mentioned in the Advanced Option Setup section of this document, you should also have Miscellaneous Shot Treatment and an Imported Shot Treatment codes created. It is important that neither of these treatments have Dragonfly Shot Requests associated.

Creating Radiograph Requests from AVImark

Generating a request from AVImark can be accomplished in multiple ways. Adding a treatment with associated Dragonfly requests directly to Medical History is the most common method for submitting a shot request.

- **Right-clicking** in the Patient Area and selecting **Radiography, Create Request** will display a selection screen displaying all AVImark treatments with associated DICOM requests.
- To make your selection(s) from this window, highlight the desired entry, and press the **Spacebar** to place the highlighted entries in the Selected area found in the lower pane of the window.
- Choose the appropriate doctor and click **OK**. This will create a Medical History entry for each selection made.

By creating the Medical History entries, shot requests are automatically created in Dragonfly PACS using the associated plan codes for the designated modalities.

- Highlighting an AVImark Medical History entry with associated shot requests will display the Radiograph checkbox in the Attachments pane in red with a check. This bright red color indicates there is a pending shot request.



- When the shot request is completed by the modality and updated in the Dragonfly PACS system, the Radiograph attachment will become maroon in color, indicating images are available for viewing.



Completed Shot Requests

AVImark will query Dragonfly for any requests that have been completed, but not yet updated in AVImark. When found, the appropriate association is made and the entry will be automatically updated indicating the status is complete. Information will then be added to the files to allow viewing and all other DICOM related functions.

If more images were taken for a request than were initially ordered, the user is notified, and an entry for the miscellaneous shots (Using the Miscellaneous Shot Treatment Code as defined in Advanced Options) is added to the patient's Medical History. The quantity of this entry reflects the difference between the number of shots initially ordered and the actual number of images captured with this request.

The **Check for Completed Results** can be automated. This automation will allow a designated AVImark workstation to poll on a regular basis for completed requests and automatically update Medical History with the captured shot information.

- To initiate the automation, you will want to select an AVImark workstation that will have AVImark running during all business hours.
- From the AVImark CID on the chosen workstation select **Utilities, Set Dragonfly Watch Computer**. You will be asked to confirm your designation. It is important to remember that only one AVImark workstation can be set as the "watch" computer at a time. If you currently

have a computer set as the “watch” computer, and you set another to be the “watch”, the newly selected workstation will override the previously assigned computer.

Viewing Images and Checking Request Status

You can view the status of any shot request, view shots taken, as well as manage shot status from within the same area.

- To access images, click the **Radiographs** attachment. You will be presented with the details of the Radiography Requests for this Medical History entry, such as; Status, number of Ordered Shots, and number of Taken Shots.
- **Right-click** on a completed request to see the following options:
 - **View Images:**
 - **View All for Patient**
 - **View Study**
 - **Send To Web** - Allows you to post images on a Dragonfly PACS Web Server. Within the scope of the images selected from the menu option, you will be able to manually exclude any images you wish. You will be asked for the email addresses of the individuals that will have access to view radiograph images from the web. The email will include a link providing them access to the site. The image retention on the web is determined by your Dragonfly PACS Web Server.
 - **Choose from All**
 - **Study**
 - **Burn to CD or Folder** – Allows you to designate a CD RW or a thumb drive to burn the images onto. A lightweight Dragonfly DICOM viewer will be included. To burn a CD your computer must have a CD burner and NERO software installed.
 - **Burn CD or Flash Drive – Choose from All**
 - **Burn CD or Flash Drive – Choose from Study**
 - **Digital Imaging Send** – Enables users to send images from PACS while still in AVImark, provided PACS is setup to perform the Telemedicine function.
 - **Digital Imaging Send - Choose From All**
 - **Digital Imaging Send - Study**
 - **E-Mail** – Gives the ability to convert a set of DICOM images to JPEG, BMP or PNG and attach to an email to send. Boilerplate is inserted into the email body, but can be customized by the user before sending.
 - **E-Mail - Choose From All**
 - **E-Mail - Study**
 - **Request Status:**
 - **Check for Completed Requests** will poll the Dragonfly software for completed shot requests.
 - **Set Status for Requests to Complete** will mark the status of this request as completed. This will need to be done to manually close the request if it has been completed without taking the recommended number of shots.

Emergency Shot Reconciliation

In the event there are emergency capture studies (or studies not yet associated to an AVImark patient's Medical History), you will be provided a way to reconcile those shots with AVImark.

- From the Patient Area of the AVImark CID **right-click** and select **Radiography, Create Request**.
- In the DICOM window, select the appropriate **doctor**.
- Click on the **Dragonfly PACS** menu and choose **Reconcile from Emergency List to Current Patient**
- You will be presented with a screen containing a list of all currently non-reconciled shots. Upon making your shot selection, a new Medical History entry will be created with the Miscellaneous Shot Treatment Code (as assigned in Advanced Options), and the appropriately linked images.

Importing Images

The ability to import jpg images from a disk has also been provided. This feature will allow you to archive your images through Dragonfly, and then import the images into AVImark via an automatically created Medical History entry.

- **Right-click** in the AVImark Patient Area and select **Radiography, Dragonfly JPG/BMP Image Import**.
- Dragonfly will open and the selected patient information should appear in the upper left corner.
- In the lower right pane, you will need to select the <<**Images In/Out** button.
- From the menu that opens select the **Import Images** button.
- Browse and select the images you wish to import for this study.
- Once images are selected press the **Import Images** button.
- The images can now be archived by selecting the <<**Management** button found in the lower right pane.
- Select **Archive** from the opened menu.
- Select the option that best represents the images you would like to archive.
- Verify the proper patient selection. It is possible you may have to select the appropriate client/patient from the list provided in the Patient Data section.
- Make any desired notations or comments to the study from within the Study Data section.
- When image selection and study notations have been made, and patient verified, the Archive button should become available for selection. Press **Archive**.
- You should notice the client/patient information is no longer displayed in the upper left corner of the Dragonfly window.
- There will be a new entry in the Medical History for that patient with the Dragonfly Imported Shot Treatment Code as designated in Advanced Options.
- Upon the next automatic status update, whether manual or scheduled, the imported image thumbnails for the study will be displayed in the Radiographs window.

Patient Charts

DICOM shot information can be reported on the Patient Chart.

- From the Patient Chart Form window select the new option **DICOM Info** from the “*Include the Following*” list of check boxes.

Reporting

- **Right-click** in the Patient Area and select **Radiography, Print Requests Status List** to generate a Radiograph Request report.
- The Radiograph Requests window will open enabling you to select the provider, status, start, and end dates you wish to be reported.

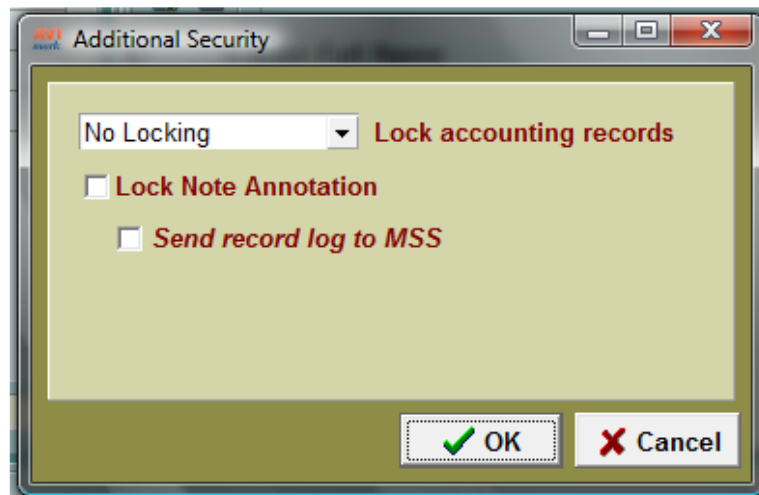
AVImark Account Locking Feature

For hospitals that choose to use this feature, AVImark can now force users to correct mistakes by making adjustments instead of only modifying amounts or removing entries. This feature is being implemented in order to help clinics ensure their historic data is consistent.

**** Important Note:** Hospitals that use the AVImark Sidekick feature cannot use Account Locking when Importing. For more information contact AVImark Technical Support at 877-838-9273 opt 1.

The locking feature is located in Users and Security and it consists of 3 options.

- From the **CID, Work With** menu select **Users and Security**
- Once in Security select the menu option **File, Additional Security**.
- The **Record Locking** options can be restricted by time-frames.



Lock Accounting Records

The **Lock Accounting Records** deals with the history entries stored in the client's Accounting.

- No Locking- *Set by default*
- By Day- *Ability to edit records for today's date only. Past accounting records are locked.*
- By Week- *Ability to edit records for 7 days.*
- By Month - *Ability to edit account records dated in the current calendar month.*

Lock Note Annotation

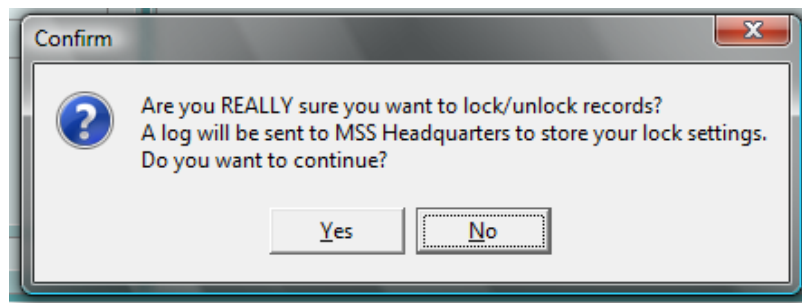
The **Lock Note Annotation** feature will allow more security to be used in the Note window; forcing an Annotation to be created when a change needs to be made to an original note.

- The **Lock Note Annotation** will lock the original notes after closing the Note window and will then force an Annotation to be made when the note is to be edited.

Send Record Log to MSS

The main function of *Send Record Log to MSS* is to have AVImark send a log to MSS Headquarters to record changes that have been made in the Additional Security window. Whenever the *Send Record Log to MSS* option is checked or unchecked a log is sent to MSS recording the settings defined.

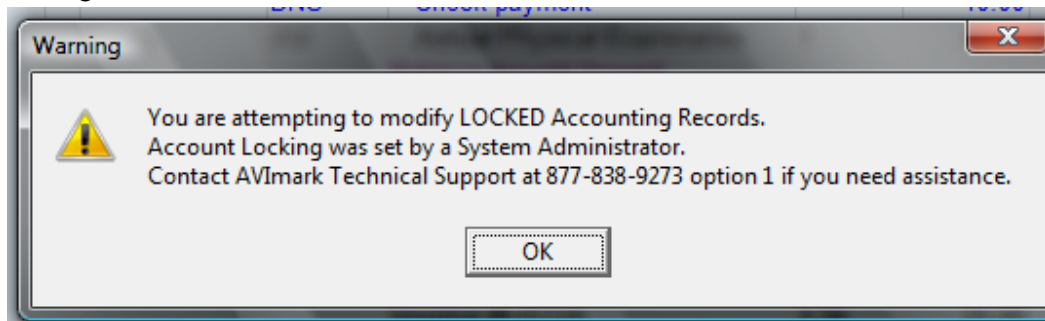
- **Send Record Log to MSS** logs a record of when the Lock Accounting Records and/or Lock Note Annotation is checked or unchecked. You will find AVImark locks these files based on the set locking selections. This option is unchecked by default. It can only be checked and unchecked by someone with System Wide Authority. All other users will receive a security message as notification that they are not authorized to set this function.
- When you check the option to Send Record Log a prompt will be displayed.



- Clicking **Yes** will seal the selected Locking options and the Accounting and Note selections are grayed out and cannot be changed by anyone other than ADMIN. (Once grayed out, the edit boxes can only be changed when Send Record Log to MSS has been unlocked by ADMIN.)

How AVImark works when Accounting Locking is in place:

- When an unauthorized user tries to make a change to Accounting they will receive a warning message.



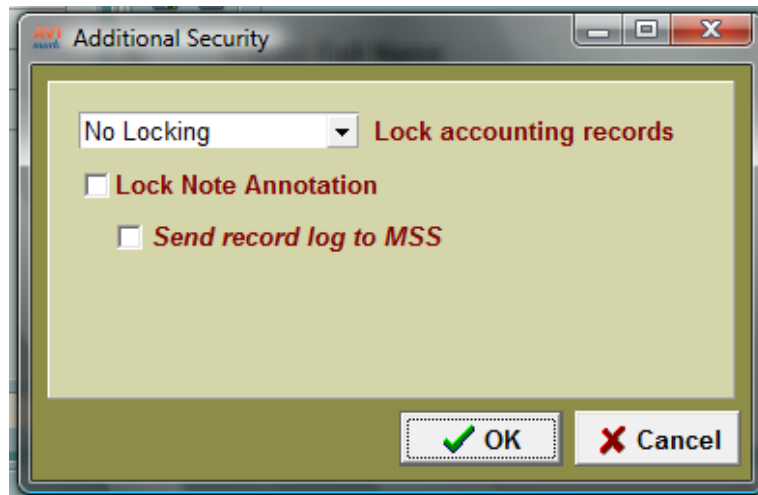
- **Built-In Utilities:** When Account Locking is active, AVImark prevents running built-in utilities that can alter Accounting records. Users will receive a warning message stating, “This utility is unable to run due to the Account Locking feature. Account Locking was set by a System Administrator.”
- **Locking Prevents use of Sidekick:** Hospitals that have the Account Locking feature active will not be able to Import from Sidekick. When accessing Utilities, Sidekick on the Server a warning message prompt appears stating, “Sidekick feature is disabled due to the Account Locking feature. Account Locking was set by a System Administrator.”
- **Transferring Accounting:** Locking Account records prevents using the right-click Transfer option from the Accounting window. When attempting to transfer accounting to another client a warning message prompt appears stating, “You are attempting to transfer LOCKED Accounting Records. Account Locking was set by a System Administrator.”

AVImark Note Annotation Feature

The new Note Annotation feature will allow more security to be used in the Note window; forcing an Annotation to be created when a change needs to be made to an original note. The Annotation feature works in conjunction with the new Additional Security features.

AVImark Setup

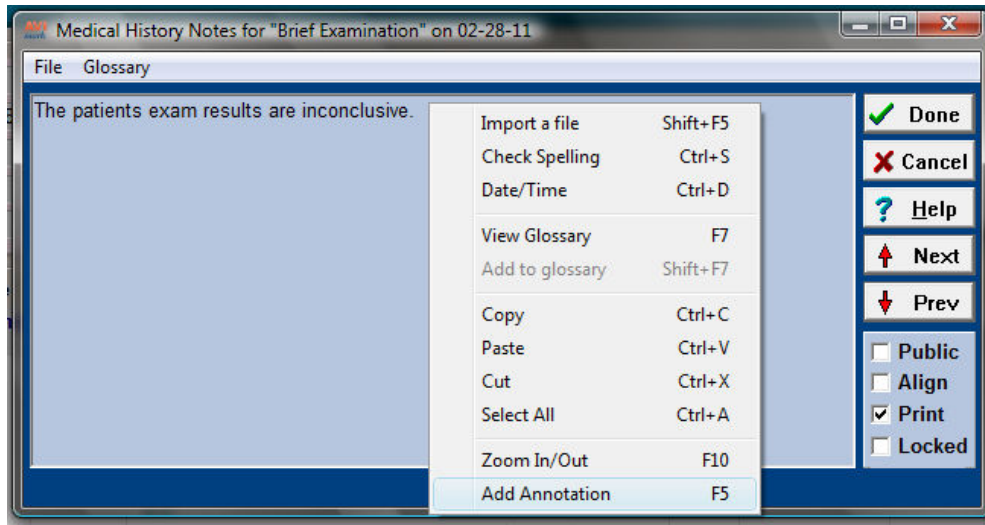
- The option of **Lock Note Annotation** in the Additional Security window of Users and Security will lock Client, Patient and Medical History notes. In the SOAP record, notes will be locked in the Subjective, Objective, Abnormality, Assessment, Plan and Client Instruction areas after the original notes have been entered.
- With this option set AVImark will lock the original note after the Note window has been closed. A user can return to the window and only make changes by adding an Annotation to the original notes.



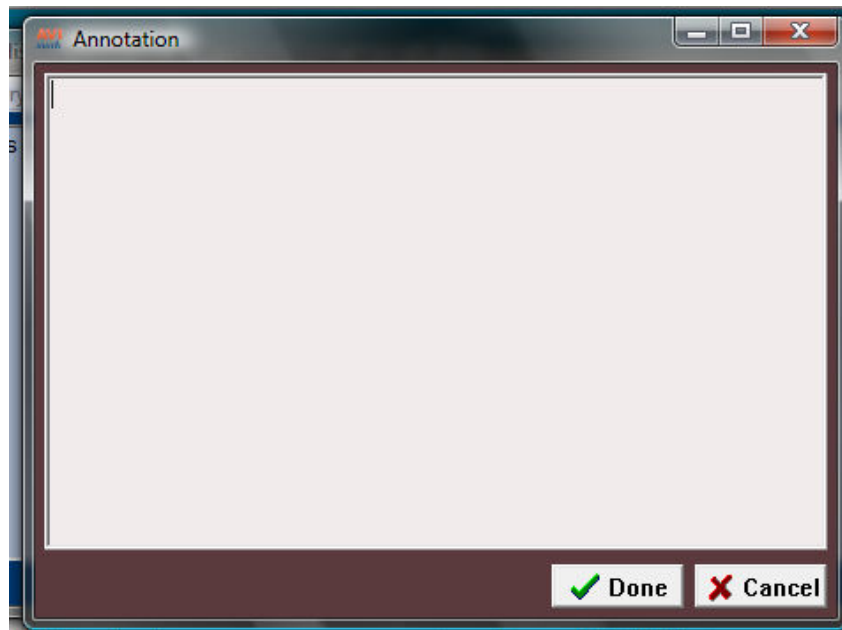
- With the **Send Record Log to MSS** option checked it will secure the setting defined for Lock Note Annotation and send a log to MSS indicating the options specified.
 - The option can only be checked or unchecked by Administrators.
- All annotations will print when Patient Notes are being printed, such as: Patient Chart, Invoice, etc.
- To allow only specific users to create an annotation authorize the new security function, **ADM44 – Add Note Annotations** to the appropriate users.

Using the Note Annotation

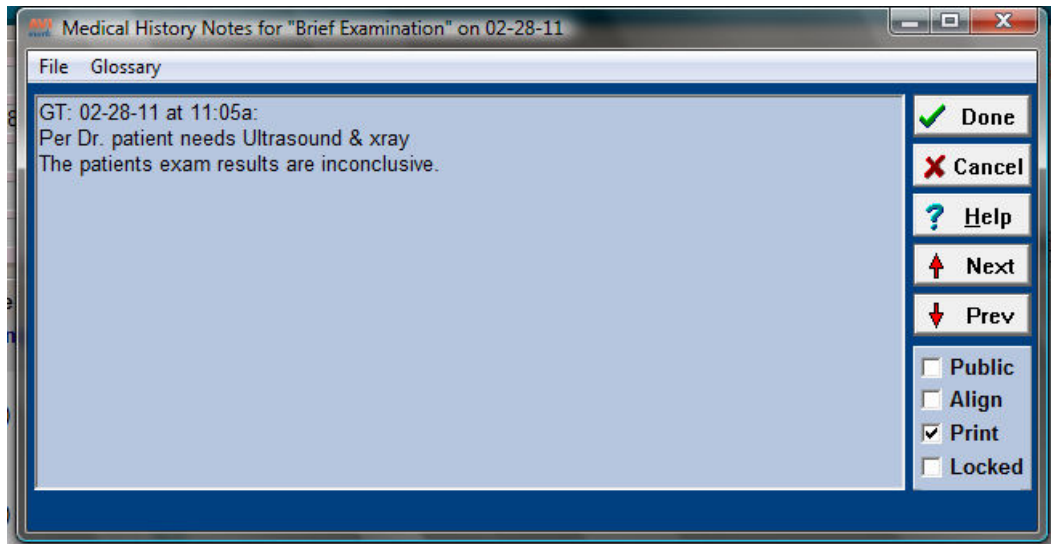
- With the “Lock Note Annotation” option set you must press **F5** or select **right-click Add Annotation** in a Note window in order to add notes into an existing Notes window.



- In the Annotation window the user can make the desired note additions by typing the annotation and clicking Done.



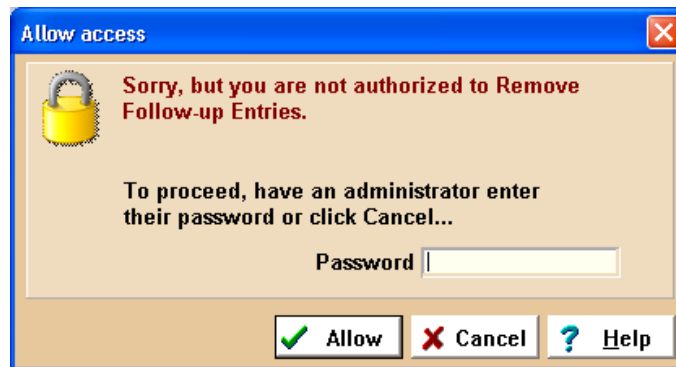
- When an Annotation is made, AVImark will record it with an entry in the Note window. The Annotation will include the user ID, date and time.



New Follow-Up Security

AVImark now contains new security features for Follow-up entries. The new security functions are:

- FL01: Add Follow-Up Entries
 - FL02: Change Follow-Up Entries
 - FL03: Remove Follow-Up Entries
 - FL04: Post Follow-Up Entries
- If from the CID patient Follow-up tab an unauthorized user tries Adding, Removing, or Posting follow-up entries they will receive the security check warning.



- When in the Follow-Up List window an unauthorized user will also receive the security check prompt when trying to Add, Post or Remove follow-up entries.
- If the unauthorized user tries to Change a follow-up entry, either from the CID or directly from the Follow-Up List, AVImark simply opens the window in the VIEW ONLY display allowing the user to view information but preventing them from making changes.

AVImark/X-Charge Change for PCI Compliance

The ability to use X-Charge Payment Processing with AVImark while maintaining compliancy with the PCI Data Security Standard can be obtained with the installation of AVImark version 2011.0, and X-Charge version 7.1 (including the corresponding XCClient.dll available from X-Charge). **PCI compliance is required for any business that accepts payment cards.** With this in mind, we have implemented improved security to work in conjunction with X-Charge's security measures to provide our mutual customers peace of mind knowing they will meet the PCI Security Standard.

Many of the changes were "behind the scenes" handling of sensitive data and will require no user intervention and will go unnoticed by the AVImark user. Changes to AVImark include:

- Easy access to your X-Charge Setup fields. By accessing the X-Charge-Setup window from the **Hospital Setup, System** tab, **X-Charge** sub-tab you are able to make necessary X-Charge device settings without having to exit AVImark.
- The XCTransaction.dll file will no longer be required; thereby eliminating the need to register the file manually or through the AVImark Utilities menu.
- AVImark will use the signature capture functionality in X-Charge eXpressLink, to retrieve a copy of the signature for storage in the AVImark "Signatur" directory.

Additional X-Charge Features

AVImark now provides the ability to assign an X-Charge Merchant ID for each AVImark Site. Setting separate Merchant IDs within AVImark will ensure credit card transactions are applied to the appropriate X-Charge account for each site. Each credit card transaction processed through AVImark will allow resulting information to be kept separate between sites within a single X-Charge account. Setting up your Merchant ID for site locations can be accomplished by:

- Opening Hospital **Advanced Options** and typing **Merchant ID** in the **Search** field.
- Select the **Merchant ID** option in the X-Charge category.
- Enter the **Merchant ID** as found in your X-Charge Server Setup for the corresponding AVImark Site.
- When the Merchant ID information has been entered for each site appropriately, click **Done**.

AVImark Accounting Changes

With this new X-Charge integration, there have been some changes made to how credit card payments are changed and removed.

- **Removing a credit card payment from AVImark Accounting:** When a processed credit card payment is removed from AVImark Accounting, you will be presented with the following message: "Clients credit card has been charged. Void credit card transaction?". Yes or No
 - Selecting **Yes** will allow the removed credit card payment to be processed as a returned payment and will be displayed as such on the X-Charge report.
 - Selecting **No** will allow the credit card payment to be removed from AVImark only and charges applied to the credit card will be retained.
- **Changing a credit card payment from AVImark Accounting:** Clicking Done on a processed credit card payment from within the AVImark window will no longer attempt to process the credit card transaction again. No data will be sent to your credit card payment processing vendor. Clicking the Done button will only allow changes made to the Change Transaction window to be held.

Patient Record ID Merge Word

For clinics referring to the lab patient record number they will now have the ability to merge that number into MS Documents by using the merge word **<patient-record-id>**. The advanced option “*Display patient record number*” must be set to True in Advanced Options in order to display the number on the CID, Patient area.

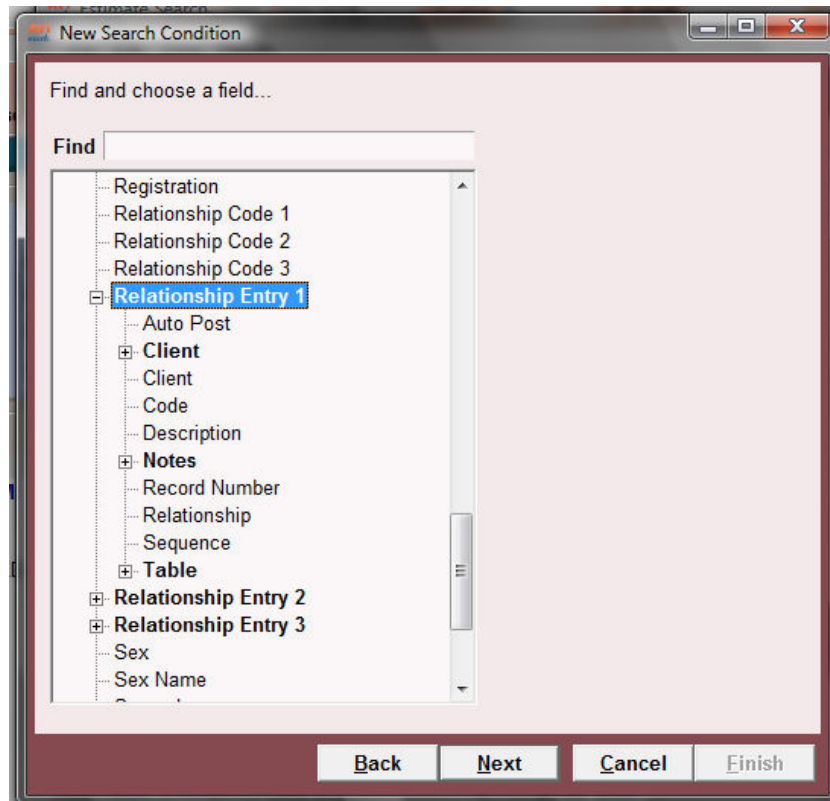
No. 13148		
CANEX	Canine Exam	06-30-11
4096	Butorphanol 10 mg injectable	06-30-11
203C	Examination, annual.C.	02-21-12

Reminders Follow-ups Estimate Ownership Schedule

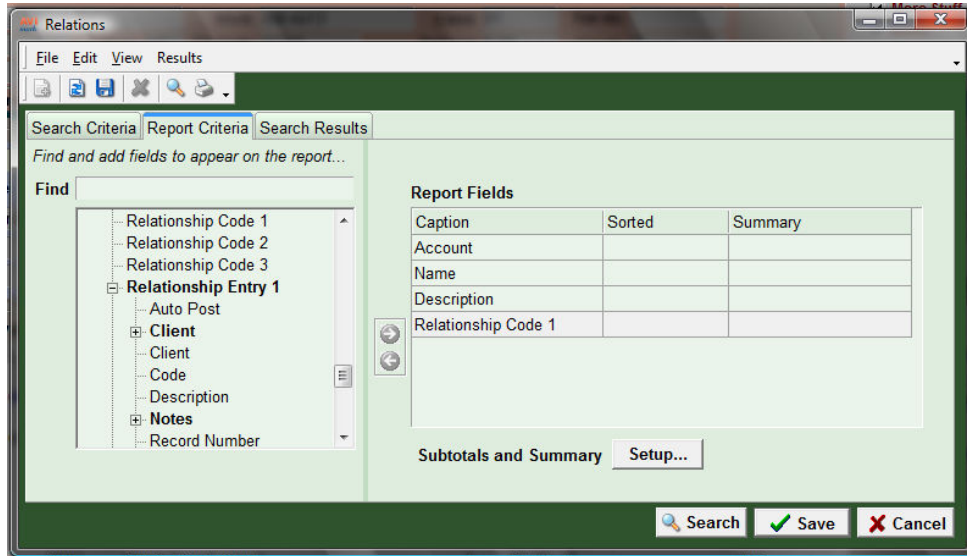
Search for Patient Relations

AVImark now gives the ability to include Patient Relation information through the Information Search.

- New Relation search options have been added to the Search Condition window.
- After selecting the *Patient* area as the condition and continuing on with the setup you will see the new Relation options in the *Find and choose a field* window.
- Select **Relationship Code** to base the search on the Code defined for the Relation entry.



- To limit the search based on the detail information of the Relation entry, such as Description, Relationship, etc. choose the **Relationship Entry 1**, Entry 2 and/or Entry 3 options.
- The Relation information can also be reported on the Information Search results.



ASAP Report for Alabama

Alabama now requires clinics to report controlled substances in the ASAP 2007 format. In an effort to keep these clinics in compliance with these requirements, AVImark has changed the ASAP utility to meet the needs of these clinics.

To begin generating the report for the State of Alabama, you are required to:

- Have your Hospital DEA number assigned on the Demographics tab in Hospital Setup
- Assign your doctor DEA numbers in Users and Security
- Assign your doctor NABP numbers in Users and Security
- Make sure the AVImark items to be reported have the C Action code (denoting it as Controlled Substance) and the NDC number assigned
- Have the “Include Sequence Number option for printing Drug Labels” set to True in advanced options
 - Printing prescription labels through AVImark will assign numbers and maintain them in sequential order. This number will be a unique Rx number that will be printed on the corresponding Drug Label, as well as being reported for that Controlled Substance line entry on the ASAP report.
- Setup the Days Supply for the controlled substances. You will do this in the “Minimum Interval Between Refills” field, on the Pharmacy tab in the change item window of the controlled substance.
- Setup client More Stuff with the Field Name of Owner_DOB, and type of Date, and there is an actual Client DOB entered into this field
- Setup client More Stuff with the Field Name of Owner_Gender, and type of Phrase, and enter M for Male or F for Female into this field

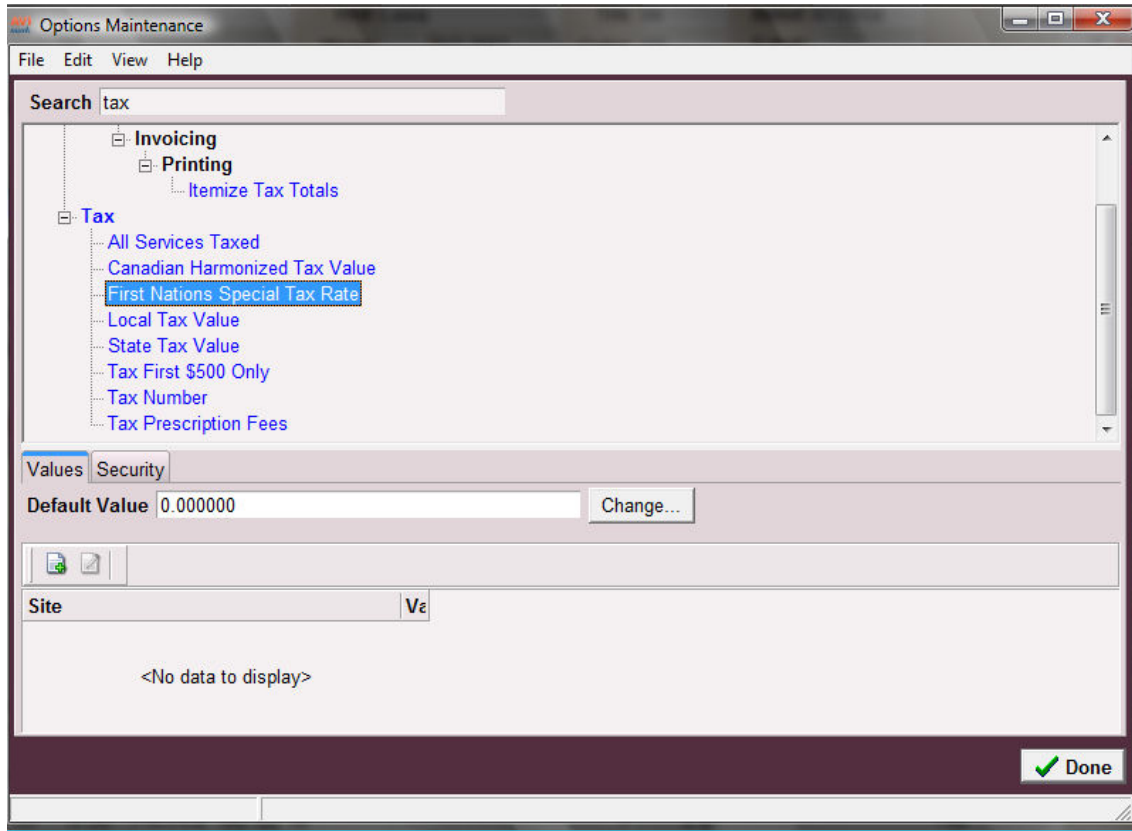
To acquire the properly reported data for your state follow these steps:

- From the AVImark CID select **Utilities, Utilities** and type in **ASAP**.
- You will be prompted with a Backup option, if you currently do daily backups you can click No. If you would like AVImark to be backed up, click Yes.
- In the ASAP utility, select the **From** date and **Days to send**.
- For **Export to**, select the location to which you wish to export the file. For example, the C:[] option.
- Select your state: **Alabama**
- Select the option **Only report entries with label notes**. If a Controlled Substance entry in Medical History contains drug label notes, only those entries will be reported when using this option.
- Click **Run**.
- When completed, you will find the .dat file at the location you selected, with a filename including the clinic DEA number and MMY.DAT (123589321_0411.DAT).
- You will then send this file to the State of Alabama.

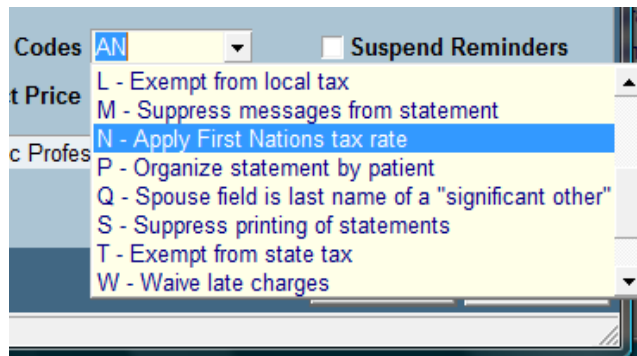
Special Tax Rate for Canada

AVImark has implemented some changes for the First Nations in order to meet a new regulation for the HST in Canada.

- Because the First Nations do not have to pay the full tax amount and the tax rate will vary by Province there is a new Site specific Advanced Option for **Special Tax Rate**.



- To classify the appropriate First Nation clients the new action code of **N, Apply First Nations Tax Rate**, has been added. Clients with this action code will be charged the Special Tax not the HST for those entries with the First Nations Tax service action code.



- To apply the Special Tax Rate to the desired treatments and items assign the new action code of 7, **First Nations Tax**.
Treatments and Items can have both the S,L,T action codes and the 7 action code. AVImark will look at the Client action codes to see if the N is present and if so then it will verify the entries have the 7 action code assigned and apply the Special Tax Rate.
- The invoice will list the First Nation rate as well as the HST, as there is a possibility of both HST and the First Nation Rate being charged on one invoice. Notice the Special Tax Rate total is displayed under the **FNT** heading on the invoice and the harmonized tax total will be displayed under the **HST** heading.

INVOICE						
Mono Veterinary Clinic Professional Corporation						
633391 Hwy. 10 RR 4 Orangeville, ON L9W 2Z1 519-941-6383						
FOR: Mr Lewis Park 230 Elderberry St Orangeville, ON L9W 5J9			Printed: 03-10-11 at 8:43a Date: 03-10-11 Account: 2214 Invoice: 155381			
Date	For	Qty	Description	Price	Discount	Net Price
03-10-11	Tabby	1	Feline Leukemia Test (IFA)*			88.50
03-10-11		1	Blood Collection Fee*			25.00
03-10-11		1	Feline Reduced Protein 2kg*			21.68
03-10-11		1	Physical Exam*			61.50
03-10-11	#11520		Check payment			-205.42
Old balance		Charges	HST	FNT	Payments	New balance
0.00		196.68	*1.87	6.87	205.42	0.00

- On the Period Totals report the Special Tax Rate will be listed as **F.N.T.** with the tax amount charged and the amount of services/items.

Date of Report: 03-10-11
 For: 03-10-11 - 03-10-11

Mono Veterinary Clinic Professional Corporation
 PERIOD TOTALS

	TOTAL	COUNT	AVERAGE	% TOTAL
Cash Payments	0.00	0	0.00	
Check Payments	888.66	4	222.16	81%
Visa Card Payments	204.55	1	204.55	19%
Total Payments	1093.21	5	218.64	100%
Production by Provider				
Annisa Prins RVT	515.04	3	171.68	48%
Gudrun Thomas DVM	548.08	5	109.61	52%
Total Invoices	1063.12 *	5	212.62	100%
Late Charges	0.00 *	0	0.00	
Adjustments	0.00 *	0	0.00	
	On	Tax		
H.S.T.	133.90	5.14		
F.N.T.	879.22	24.95		
Total Tax	30.09 *			
Total Charges	1093.21 **			

2011.0.1 Fixes List

Antech:

1692 - Antech - "Could Not Convert Variant of Type (Null) into Type (Integer)"

When right-clicking on any loaded requisitions in the Requisition Management window on the Download Requisitions tab, the following message was being displayed: "Could not convert variant of type (Null) into type (Integer)".

1110 - Antech -- Incorrect AVImark Site Assigned to Antech Requisitions

When using the AVImark Site feature, and valid Antech/Zoasis Site assignments were set up in Advanced Options, the proper site address information was not being sent to the lab or printed on the requisition.

Error Messages:

1433 - IDEXX PACS - Access Violation Attempting to Manually Link Client and Patient

When attempting to use the "Manually Link Client and Patient" option for IDEXX PACS, an Access Violation was generated.

895 - "... is not a Valid Floating Point Value" Error Printing Results with < Symbol

When printing results from the "Tests" window when a < or > is in the low/high range value, the following error was being displayed: ">100' is not a valid floating point value".

1739 - Assertion Failure in Medical History

When a medical history tab, other than chronological, was selected, and another patient was selected; the following error was being displayed: "An exception was raised on the server: Assertion failure (E:\AVImark\Branches\Alpha-Bugs_avi\uaviHistory.pas, line 3044)".

1655 - "Not Found" Codes Causing "List Index Out of Bounds" Error Updating

If a treatment had a "not found" code linked to it, the following errors were being displayed: "Error. Record, Treatment Association, record number, 432052, record state, Modified. Destroying modified object"; followed by: "List index out of bounds (-1)".

1463 - Automatic Patient Check In Causing Error

When "Automatic Patient Check In" is set to true and you attempt to refill an item the following error was being displayed: "Error. Record, History, record number, -1, record state, Unknown. Attempt to load invalid record number."

1034 - Integer Overflow Rebuilding Medical History with Repair

When rebuilding medical history with repair, some clinics were receiving the following error: "Integer overflow".

1597 - Assertion Failure Clicking to a Different Tab in Medical History

When something was typed in the medical history find field; and another medical history tab was selected, the following error was displayed: "An exception was raised on the server: Assertion failure (E:\AVImark\Branches\Alpha-Bugs_avi\uaviHistory.pas, line 3051)".

1450 - Error Backing Up Directly to Flash Drive

When attempting to backup directly to a flash drive, the following message was being displayed: "Please insert a blank disk #1".

Inventory:**693 - Allocated Quantity Not Allowed to be Negative**

The Allocated Quantity was not being allowed to go into negatives an entry was removed from Medical History.

1704 - (Action Code being Saved to Item

When adding a drug label to an item, the (action code was also being added.

1703 - Reorder Report Printing Incorrect Unit of Measure

The Reorder Report was printing the Unit of Measure code, instead of the description.

Miscellaneous:**1848 - ADM33 Change Dental Charts not Working Correctly**

If an unauthorized user is logged into AVImark and attempts to make a change to the dental chart, the "Allow Access" window was being displayed but the change was still allowed.

1550 - Scroll Bar Missing on Miscellaneous Tab of Hospital Setup**1140 - SMS Text Messaging Users and Security Category Needs Hidden****1276 - Top Line of Medical History Not Being Highlighted**

When entering a refill, the refill goes to the top of medical history. The top entry will now be highlighted.

1879 - Improper Warning when a Non-Logged in User is Taking Payments

When a user did not use a password to log into AVImark, and they attempted to take a payment of any kind, they were presented with the following warning: "Unable to process transaction. No user currently logged in. Please log in from the CID using utilities-log on."

1517 - ChgCode Not Changing Accounting

When running the built in chgcode utility, by species, the accounting was not being changed.

1874 - VSurvExport Generating Errors when Using Client/Server

VSurvExport.exe would not work with AVImark in ClientServer Mode.

1799 - Not Found in Treatment Associations

When a code was linked to a treatment, and the code was removed, this caused a Not Found entry on the parent treatment. If this not found code was added back into AVImark, it was being attached to the parent treatment, even if the description was different. Now the update process will remove associated codes with the type as other.

Patient Chart:

1720 - Patient Chart - Future Follow Ups Showing Overdue

When including follow ups on the patient chart, future follow ups were showing under the overdue heading. The heading for follow ups has been change from “Overdue Follow Ups for : Spot” to “Follow Ups for: Spot”.

1137 - Last Page of Patient Chart Blank When Including Dental Chart

1747 - Patient Chart: Most Recent Vaccine Information Not Printing

The vaccine information for the most current vaccine was not being printed on the chart.

1500 - Client City, State and Zip Missing on Chart

If a referral was typed into the referral section field in the client area and when Referral Phone was included on the chart; the client’s city, state, and zip code were missing on the patient chart.

1762 - Access Violation Printing Patient Chart

When the Dental Chart option was checked and 'Print Using Chart Terms' was set at 0, the following error was being displayed: "Access violation at address 010FEE36 in module 'AVImark 2011.1.0.15014 Alpha-Bugs Debug.exe'. Read of address 00000000".

1798 - Error Opening Some Patients

When opening some clients, in some databases, the following error was being displayed: “Exception ERecordIOException in module AVImark.exe at 006F5111. Error. Record, WP, record number, 2805760, record state, Loaded. Error loading record. Variable block data exceeds maximum allowable size.” Running the ZNote utility will now correct this error.

SOAP:

1795 - Abnormalities Missing After Undeleting Patient

When a patient is undeleted, any entry that has a MCR attached was missing all the abnormalities.

1552 - Prompt for "Check History for Drug Interactions" when Canceling Out of Window in SOAP

When going into the “Choose Entry” window in the MCR, the following message was being displayed, even though nothing was selected: “Check history for drug interactions at entry?”

1933 - Slowness in the MCR

When there were multiple Body Subsystems, the MCR was opening slowly.

VetCentric:

1455 - Items are Being Incorrectly Entered as VetCentric Items

When a VetCentric user had the AVImark Advanced Option "Inventory Lot Number" set to True, and put a Non-VetCentric item into Medical History, that item was being entered into Medical History as a VetCentric item.

1662 - VetCentric - Duplicate Rx IDs Being Assigned

When sending VetCentric orders from different workstations at the same time, but for different clients, the Rx IDs were being duplicated.

1784 - Drug Label Places VetCentric Information on Notes

On a select few clients, no matter what drug they enter into medical history, the drug label was placing VetCentric information into the notes.

2011.0.3.1 Fixes List

2227 - Problem with System CD

Upon installing a system CD the following message was displayed when posting: “Error. Record, Account, record number, -1, record state, Unknown. Record is deleted. Attempt to load invalid record number”.

1988 - KASPER Locking Up

When attempting to run the KASPER utility, the program was locking up.

2195 - Delprt Report is Blank

The DelPrt utility was not displaying information. The utility will now work correctly.

2011.0.4.0 Fixes List

2283 - Quickbooks Exporting Incorrectly

When using account locking, Quickbooks was not exporting correct information.

2191 - InventoryReset Utility Giving Assertion Failure when Running

The InventoryReset utility was displaying the following error: “Error. Record, Item, record number, 194, record state, Modified. Destroying modified object.”