

# **AVImark ReadMe 2012.5.0**

## **Table of Contents**

**Please use the bookmark menu on the left to navigate between each project and feature.**

- 1. Intelligent Inventory Improvements for MVS**
- 2. Treatment or Item Alert Prompt**
- 3. Advanced Security Enhancements**
- 4. Unit Price on Invoice**
- 5. MPS Enhancements**
  - a. MPS Windows Setting Check**
  - b. MPS – Multiple User Logins**
  - c. MPS PASS Accounts Password Protected**
  - d. MPS Login Areas Timeout Reduced**
  - e. Downloading MPS Updates**
- 6. 2012.5 Fixes List**

## Intelligent Inventory Improvements for MVS

A change was implemented to accommodate MVS purchase orders for situations when the order contents are shipped at different times from different locations. For users taking advantage of the auto-import feature for II purchase orders, there will be little noticeable difference. The only likely noticeable difference will be that it might appear that items are “falling off” an already imported PO. This should not cause alarm, as that is an indicator that the items will be included on a different new PO as it is being filled. This will generate a new PO with those items.

For new II integration setup after updating to the AVImark version 2021.5, the steps will be the same as in the AVImark ReadMe for the feature. No additional steps necessary.

Existing II feature users will need to update their II integration. Please follow these steps:

- Update AVImark to 2012.5
- Run the Uninstall.bat found in the IntelligentInventory folder within the AVImark folder.
- Run the IntelligentInventory.exe self extractor (found in the AVImark folder) to extract the contents into the AVImark folder. This will overwrite the IntelligentInventory subfolder within AVImark containing 12 files.
- Run the “Run Me.bat” file (found in the IntelligentInventory subfolder) to install the IIGatewaySvc.

With this change, it will become necessary for users that choose not to use the auto-import feature to be aware that N or U purchase orders that appear to have no line entries will need to import those seemingly empty orders to AVImark. The reason for this is: a missing line item on an updated order indicates that the line item should be removed from the main order. So when the entire order ends up getting filled on other orders we need that empty or blank order so we can remove the corresponding items from the main order and when the entire order is filled, we need the final “blank” order to send the “closed” message. Important things to remember:

- If you see an empty new or update order, you need to import it.
- AVImark will see that the update makes the PO “empty” so it will send a close command to II and then remove the order from the green AVImark PO screen.
- Although it might be tempting to a clinic to delete an update that appears blank, it is important to import it anyway.

## **Treatment or Item Alert Prompt**

In the instance where an alert has been associated with a treatment or item and the service is administered to Medical History, the Alert will prompt after adding the service and before other prompts appear such as Drug Label, FollowUp, Inventory Used, etc.

## Advanced Security Enhancements

To prevent staff members from inadvertently turning on the Advanced Security feature the option has been removed from Hospital Setup and is now located in Users and Security.

- From in Users and Security select **File, Additional Security** from the menu.
- Select the **Advanced Security** option to activate the associated Advanced Security options, which will appear after relogging into AVImark.

### *User E-mail Field*

In the PCI credentials form window an e-mail field has been added which is crucial for staff members to define in the case where a password is forgotten or lost.

- If Advanced Security credentials have already been defined for a user open Users & Security.
- In the Change User window for that staff member select the PCI option and in the e-mail field define the users email address.
- The email for a staff member can also be defined when first setting up the credentials from the AVImark Login window.
- The staff members email address will be recorded and used when the staff member requests a new password to be emailed.

## Unit Price on Invoice

You can now choose to have AVImark display the items Unit price on the invoice.

- From Hospital Advanced Options locate the new option, **Display Price per Unit** and set it to **True**. Leaving the option to False will allow AVImark to display the invoice as it currently does.
- This option will divide the total price of each item by the quantity on the invoice and the Unit price will be located between the Description and Price columns. The measure will also be listed.

| Date     | For    | Qty Description     | Price/Item | Price |
|----------|--------|---------------------|------------|-------|
| 08-13-12 | Bonnie | 2 Canine b/d 10 lbs | 17.65/Bag  | 35.30 |

*Note:* When using the new Unit Price option you will not want to activate the Line Item Discounts option because of the limited space on the invoice.

## MPS Windows Setting Check

When AVImark version 2012.5 is installed, MPS will now check for PCI Compliance Windows settings. As MPS checks for the required security settings it will display a message indicating the settings that do not meet the PCI requirements. MPS cannot be used until the following security settings have been corrected. A utility has been provided that will be ran during the update process.

IMPORANT NOTE: After running the utility, follow the prompts to restart the computer. You MUST restart for MPS to function properly.

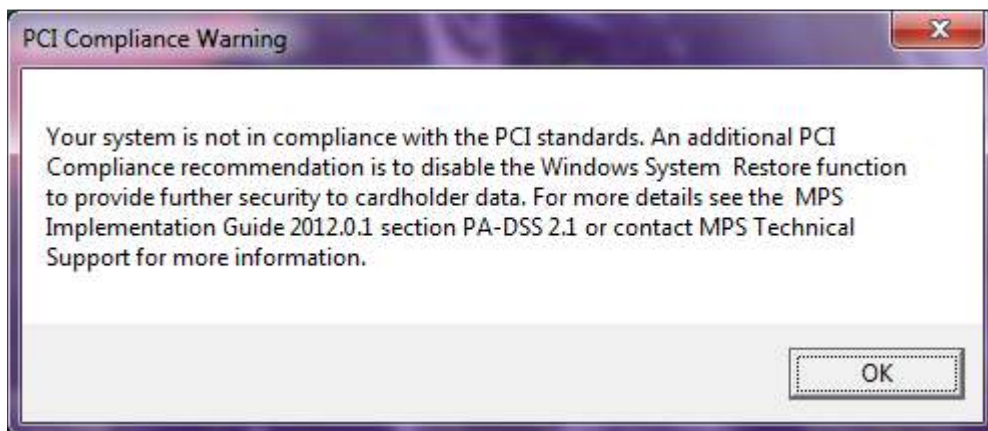
The 2 required settings that will be set by the utility are as follows:

- Encrypt Page File
- Clear Page File on Windows Shutdown

The PCI security standards also recommend the Windows System Restore be disabled to provide further security to cardholder data. The warning message below is displayed to MPS users in effort to make them aware of the new recommendation stated in the MPS Implementation Guide 2012.0.1 section PA-DSS 2.1 located in the AVImark directory in the My Documents folder.

This warning will continue to prompt every time you open AVImark or MPS until the Windows System Restore is disabled or you set MPS to no longer display the warning. To turn off the prompt go to MPS – General tab and check the box “Disable System Restore PCI Warning”.

For further instructions please contact MPS Technical Support at 877-838-9273, option 1, and then option 2.



***The following instructions can be used to set the proper Windows Security settings or you can call AVImark Technical Support for assistance.***

After updating and opening AVImark the following process will be performed automatically:

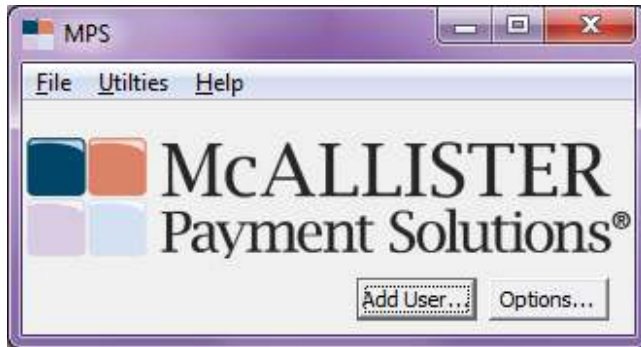
- AVImark will verify if MPS is installed on the computer and if MPS is not found AVImark will proceed as normal.
- Once MPS is located on the computer AVImark will check the Windows settings and if they are correct AVImark will proceed as normal.

- If MPS is installed and the Windows System Restore is not turned off AVImark will display a warning recommending it be turned off. This warning message will be displayed each time AVImark is opened until the required settings are in place or the prompt is turned off in MPS.
- If MPS is installed and the Encrypt Page File and Clear Page File at Shutdown settings are incorrect you will receive a Yes/No Prompt to correct these settings. Clicking No will cause AVImark to open but MPS will not work and you will receive a prompt to contact Support.
- When you click Yes on the settings correction prompt a utility will appear with all options checked and you will need to click Run.
- Once the settings are made and the computer is rebooted, AVImark and MPS will function properly.

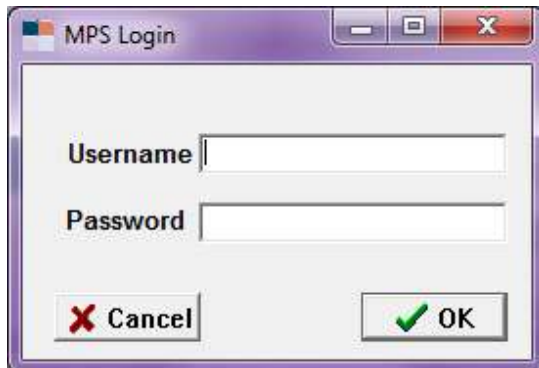
## MPS – Multiple User Logins

MPS now has the ability to add multiple user logins. When AVImark is initially setup the first user name and password used will be the Administrative login and should only be given to the hospital administrator. Once the admin login is created you can add new users in MPS.

- Open AVImark and then MPS
- Next to the options button there is now an **Add User** button

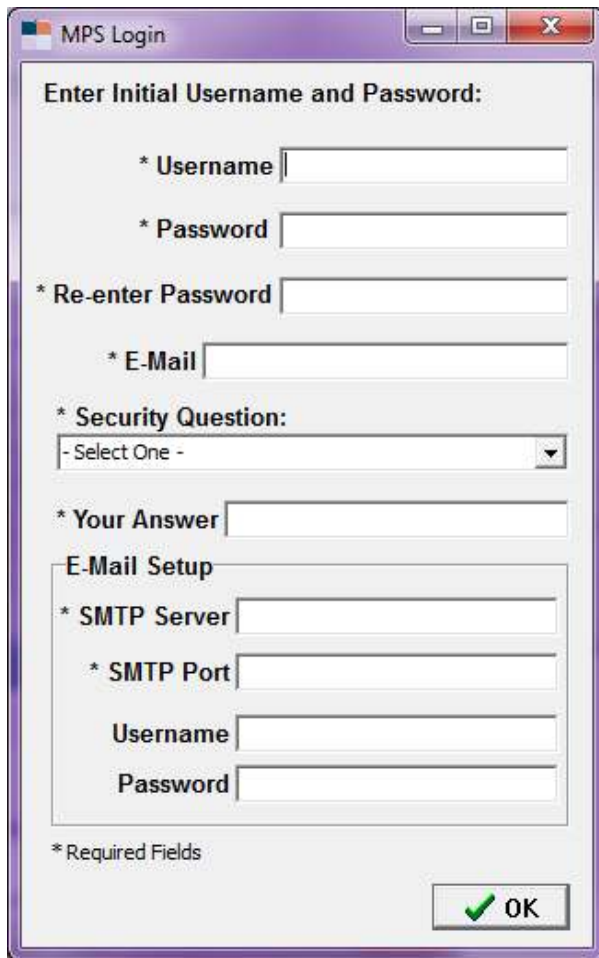


- The administrator will have to enter their credentials



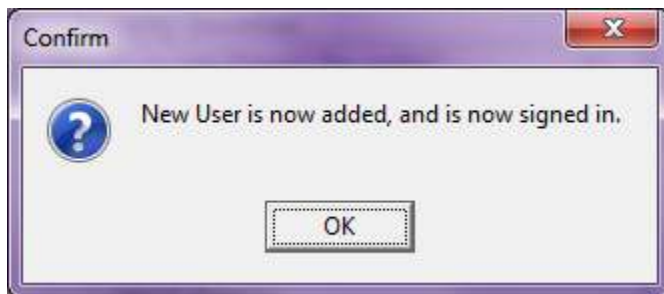
- You will be prompted with the MPS login window where you can fill out the new users information for the new login.





The image shows a Windows-style dialog box titled "MPS Login". It contains several input fields, each preceded by an asterisk indicating it is required. The fields are: Username, Password, Re-enter Password, E-Mail, and a Security Question dropdown menu. Below the dropdown is a text field for "Your Answer". There is a section titled "E-Mail Setup" which contains four more input fields: SMTP Server, SMTP Port, Username, and Password. At the bottom left, there is a note "\* Required Fields". At the bottom right, there is an "OK" button with a green checkmark icon.

- After filling out the MPS login window you will receive the following prompt:



- This new user should now be able to log into MPS with their own credentials.

## MPS PASS Accounts Password Protected

For MPS to maintain PA-DSS compliance stored payment accounts are now secured. This latest enhancement works in conjunction with the new ability to add new MPS users. In AVImark when a stored payment account is created, changed, or taken a user will have to login with their MPS credentials.

This will only have to be done 1 time per AVImark log in. What this entails is when a user logs in to AVImark and sets up a stored payment, a prompt will appear requiring the users MPS username and password. The user will not be prompted for that information again until they log out of AVImark and log back in.

### Adding New Payment Accounts

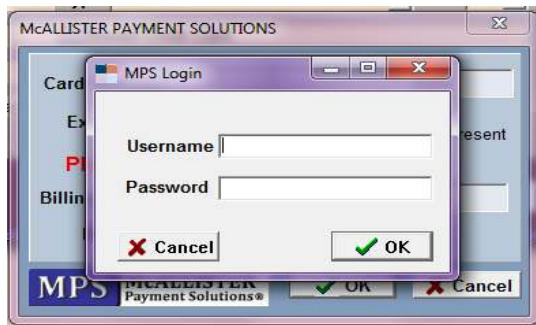
- From the Client area on the CID choose **right-click Payment Accounts**.
- In the Payment Accounts window use **right-click New** or F2
- The MPS login window should appear allowing you to enter your MPS login credentials and continue creating the payment account.
- You can then swipe or hand-key the card.

### Removing a Payment Account

- In the Client area choose **right-click Payment Accounts**
- Select the Payment Account you wish to remove and choose **right-click Remove**.
- The MPS Login window should now appear. After entering the MPS login information the payment account will be removed.

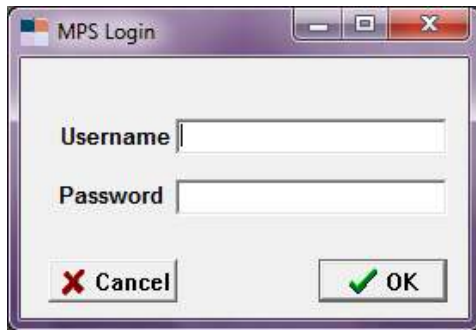
### Accepting a Stored Payment

- After selecting Stored Credit Card as the payment type and clicking OK you will be prompted for your MPS login credentials.

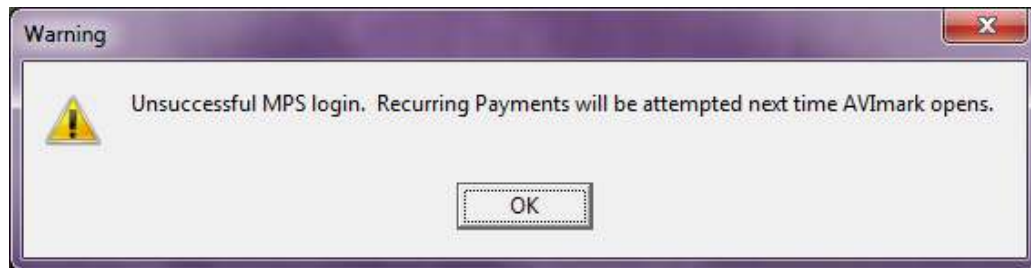


### Running Recurring Payments

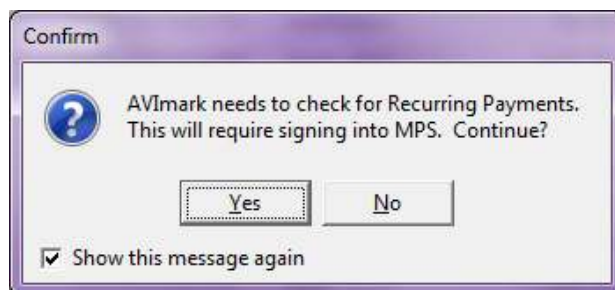
- With the option **Enable Recurring Payments** set to True, open AVImark and the MPS Login window will appear, allowing you to enter your login information.



- Once the MPS login credentials are entered you will be prompted to run recurring payments.
  - If the Advanced option “AVImark needs to check for Recurring Payments. This will require signing into MPS Continue?” is set to **Yes**, the Recurring Payments will run automatically after entering the MPS Login.
    - Should the AVImark user that first logs into AVImark not know their MPS login credentials they can click **Cancel** to the Login window.
    - This will generate the below prompt:



- Each user that enters AVImark thereafter will be prompted until the user with the MPS credentials logs in and processes recurring payments.
- With the Advanced Option set to **Prompt** you will receive the following message first at log in. Then you will be asked to enter your MPS Login Credentials:



## **MPS Login Areas Timeout Reduced**

For MPS areas that require login the timeout has been reduced from 15 minutes to 10 minutes.

- When attempting to add a new MPS user and no changes have been made in the window within 10 minutes the window will timeout and the Login screen will appear.
- MPS also times out when MPS Options is left open and unattended for 10 minutes.

## Downloading MPS Updates

Through MPS the updates can be downloaded separately from the AVImark updates.

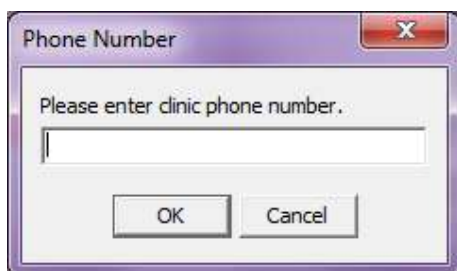
- First open AVImark then open MPS
- From the **Utilities** menu in MPS select **Update**.



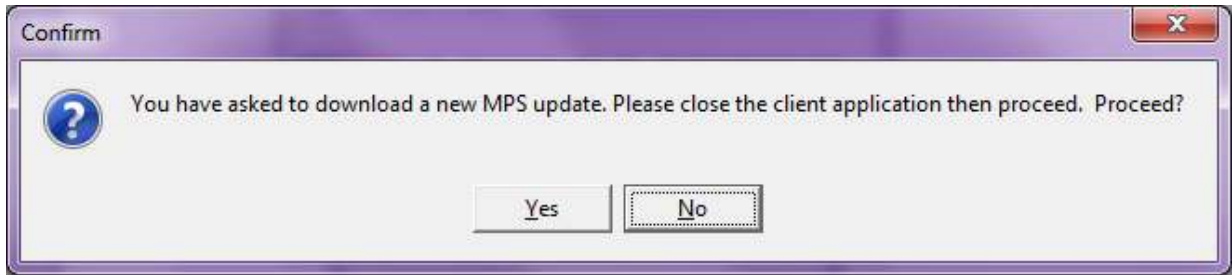
- A prompt will appear requiring your **MPS Username and Password**



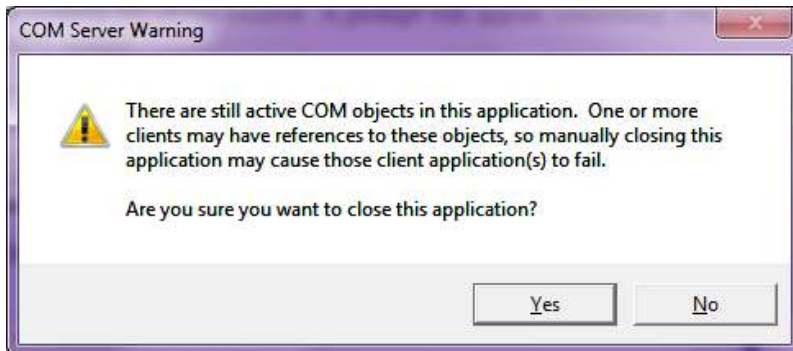
- After entering your username and password click **OK** and you will be prompted to enter the **clinics phone number**.



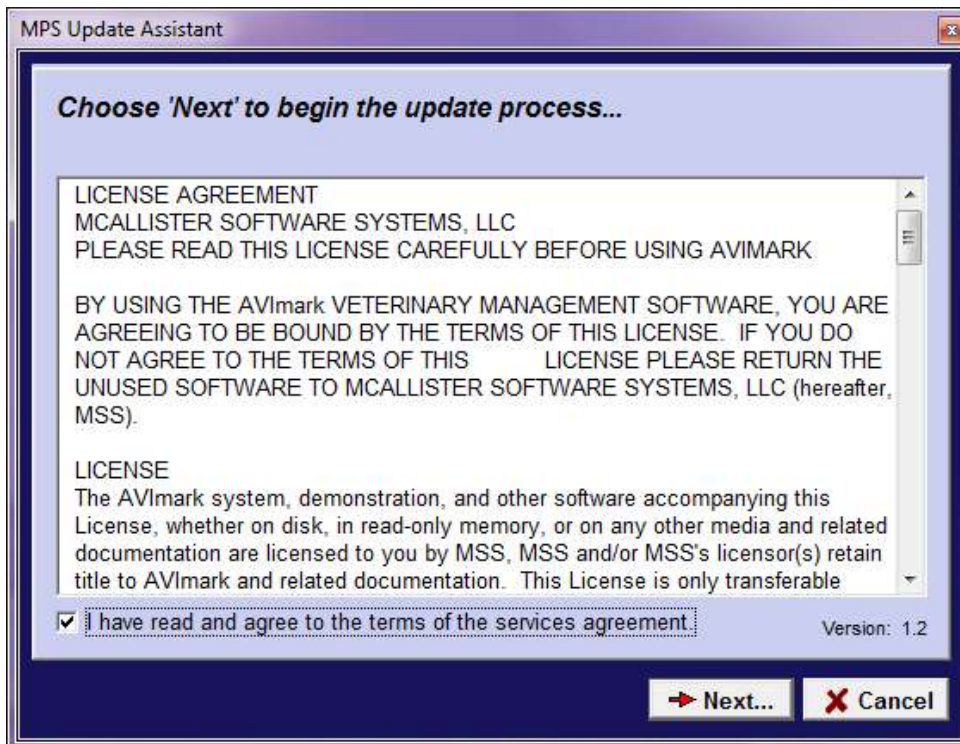
- Click **OK** after entering the phone number. A prompt will appear confirming you wish to download an MPS update.



- A prompt will appear letting you know there are still other applications connected to MPS. Click **Yes** to disconnect those applications.



- The MPS Update Assistant will open. Select "**I have read and agree to the terms of the service agreement**" then click **Next**.



- **Download Latest official release** should be the only option, select **Next**:



- The MPS Update Assistant will display your current installed version and the file you are about to download, select **Download**. When the download completes you are finished.



## **2012.5 Fixes List**

### **Accounting/ Invoicing:**

#### **1567 - Error Selecting Item on Blank Invoice**

When Account Locking was set to By Day and the posting date was set to the day before; entering an item on a blank invoice was causing the following error: "Error. Record, Account, record number, -1, record state, Unknown. Invalid record state during PropertyChanging."

#### **1320 - Print Account History Date Field Not Lined Up**

In the Print Account History window the "Through" field was not lined up correctly.

#### **3375 - Two Invoices Being Created**

If two people, on two different computers, clicked Close on an invoice at the exact same time, two invoices were being created.

### **Appointment Calendar:**

#### **4048 - New Patient Window**

When making an appointment for a new patient via right click choose – new patient – a new patient window was being opened and not the new appointment window for a new patient.

#### **4391 - APT09 Not Allowing On the Fly Block Offs to be Removed**

APT09 will only secure scheduled block offs.

### **Boarding Calendar:**

#### **4205 - Boarding Facilities Incorrect When Using Site**

If the boarding calendar is separated by site, when a facility on an existing boarding reservation was changed, only the site facilities were listed.

### **Client Area:**

#### **841 - Error Attempting to Define and Add Client/Patient More Stuff From CID**

Attempting to define more stuff from the CID was causing the following error: "Attempt to read a record from RESULTS.VM\$ that doesn't exist."

### **CSD:**

#### **878 - Able to Find Clients by Partial Work and Cell Numbers**

In some databases, searching for clients by partial work or cell numbers was not working correctly.

### **Dental Chart:**

#### **1231 - Warning When Deleting Dental Chart**

When deleting a dental chart, the user will now be presented with the following message: "Do you want to delete the dental chart for this medical history record?"

#### **1228 - Dental Chart Numeric Fields (Probing Depth and Gingival Index) Were Not Being Stored Correctly**



**1235 - Invalid Pointer Operation Deleting Dental Chart**

Attempting to delete an annotation from the dental chart, by using the delete key on the keyboard, caused the following error: "Invalid pointer operation".

**1236 - Inconsistent Saving in Dental Chart When Switching to Other Charts in Same Window**

If a dental chart is saved on an older medical history entry, and a new chart is made for a newer medical history entry, changes were not being saved consistently when switching back and forth between the two.

**1237 - Clicking Cancel on a New Dental Chart**

When a user created a new dental chart but closed the window by clicking Cancel, the changes to the chart were not saved but the chart still existed.

**1229 – Dental Chart Was Not Holding Changes When Not Using Tab****1230 - Dental Chart Was Not Holding Probing Depths Consistently****Estimate List:****4245 - Estimate Total Incorrect**

Having items on an estimate that are charging a fee AND Tax Prescription Fees was set to False, the estimate total in work with estimates was incorrect, the fees were not being included in the total.

**4143 - Pro-Rate Tag Alongs Not Working from Work With Estimates**

If Pro-Rate Tag Alongs was checked, when the group was added to an estimate from Work With Estimates, the amount was incorrect.

**EQ:****3842 - EQ Merge Words not Merging in MS Word**

The merge words <dam-name> and <sire-name> on an MS Word document was displaying the merge word instead of merging the correct information.

**4139 - <sex-name> Merge Word Not Working for Equine**

When the <sex-name> merge word will now print correctly on documents and drug labels (for example, M-Mare, S-Stallion, G-Gelding).

**Follow Up List:****1293 - Creating Follow Up for Moved Patient Gave Incorrect Prompt**

When adding a follow up to a patient marked with the M action code, the user will now be presented with the following prompt: "You have asked to add a follow-up to a Deceased or Moved Patient. Proceed?"  
Selecting YES will display the following prompt: "This patient is marked as Inactive or Moved. Re-activate this patient?"

**Information Search:****3956 - Access Violation Opening Code Editor**

Opening the code editor from a blank search caused the following error: "Access violation at address 0072ADF8 in module 'AVImark.exe'. Read of address 0000002C"

**869 - Error When Search is Setup on Sidekick**

Setting up an information search category on the sidekick computer, then importing and refreshing caused the following error when opening the information search on the sidekick: "Attempt to read a record from SEARCHCT.VM\$ that doesn't exist." The search will now be removed from the Sidekick data upon import and refresh.

**Inventory List:****4115 - Markup Percent Wasn't Being Refreshed**

In the Markup Analysis window, users will now be able to manually change the markup percent on entries. This will allow some entries to be marked up at a different percent than others.

**685 - Range Check Error Choosing an Item**

Items can now have a Container value higher than 65535 and enter the item into history without getting any errors.

**2898 - Fees Incorrect**

When setting up an item with a minimum special fee and minimum prescription fee, the amount was not consistently charging correctly.

**1225 - Error Attempting to Refill an Item that was Previously a Treatment**

If an item was previously a treatment, attempting to refill the item was causing the following error: "Error. Record, Treatment, record number, -1, record state, Unknown. Record is deleted. Attempt to load invalid record number."

**3678 - Allocated Quantity Incorrect with MyVetsMeds/VetsFirstChoice**

When an item was sent to MyVetsMeds/VetsFirstChoice, the item was marked posted but the allocated quantity was changed. The allocated quantity will now remain at 0.

**4146 - Access Violation Printing Drug Label from Inventory**

Attempting to print a drug label from the inventory list, and having the option "Canadian Drug Identification Number (DIN)" set to True was causing the following error: "Access violation at address 0174E9EC in module 'AVImark.exe'. Read of address 00000000"

**793 - Inventory On Hand Incorrect When Linked to a Treatment With a Q Action Code**

If treatment had a Q action code and had inventory used attached to it, changing the quantity of the inventory used caused the on hand to increase instead of decrease.

**4478 - Incorrect Amount Being Ordered on Purchase Order**

If the amount to be ordered was changed in the selected window, the wrong amount was being ordered from the purchase order.

**IVLS:****3173 - Test Date Column Not Populated When Tests Initiated from IVLS**

Using the Resend the Census List from the IVLS Proxy Service. From the Census tab of the IVLS, caused the test results will have no Test Date information in the Test Inbox.

**4477 - Improper Site License Prompt for IVLS when IVLS Set to False**

When a site clinic has IDEXX VetLab Station Active set to FALSE, they will not be prompted for any license files during an IVLS interaction. If an IVLS associated treatment is added to Medical History, it will just be a Medical History addition and not prompt for IVLS licenses.

**Medical History:****2512 - Importing Patients Changing Medical History Type**

Upon importing a patient the medical condition and vaccination boxes were being checked on every medical history entry, even on entries without these boxes checked when exporting.

**688 - Medical History Amount Not Updated**

When surcharging by item price or cost, if the quantity in medical history was changed, the amount was not being updated. Users will now be presented with the following yes or no prompts: "Reflect Quantity change in Inventory Used?" and "The Price needs to be updated. This will overwrite any manually set prices, Continue?"

**4092 - Warning Prompt for Quantity Value is Worded Incorrectly**

If an item has the P action code, adding the item to medical history with a quantity of 1, will now display the item description in the message: Is the quantity value of 1.00 correct for "%"?

**1226 - <serv-notes> Merge Word Placing "<" in place of "~"**

When using a ~ in an AVImark notes window, and then using a merge word to put the notes on a document, the ~ was changed to <.

**3538 - Selecting Treatment or Item Not Holding Correct Company Number in History**

When adding an entry to a client with a company other than 01, the company will be displayed correctly in medical history.

**4364 - Client Date of Birth Prompt Displayed for Non-Controlled Substances**

The Client Date of Birth prompt will only be displayed for controlled substances.

**691 - Changing Site of Item in Medical History Was Not Deducting Allocated Quantity Correctly****3997 - Removing Requisition from Medical History, Also Removing it From Requisition Management****4268 - Separate 1 Year and 3 Year Rabies Not Working Correctly**

The option to separate the 1 year and 3 year rabies was not work correctly when switching back and forth between a 1 year and 3 year rabies.

**Miscellaneous:****3992 - VetXML Warning Displayed**

When making eClaim or updating eClaim status the user was getting the following warning: "A successful vetxml status update has not occurred in 121.3 hours. Please check for errors in the system event log on the computer running the vetxml." This message will only be displayed the first time eClaims Management is accessed.

**584 - AVImark Test Results Print Out Showed the Patient Record Number as the "Chart Number"**

**4027 - Attachment Icon**

When an attachment was created the icon was not displayed until the user clicked done.

**632 - Computers Not Showing in the Network Administration Window at 15 Minutes Idle**

When a workstation was idle for 15 minutes, the computer was no longer showing in the network administrator window and the computer stopped refreshing.

**891 - Changes to How Advanced Option "Auto Print Requisition Form" Functions**

With this option set to "True", when an ANTECH test is entered into the history of a patient and the user clicks "yes" to the option to create a requisition, it will automatically print the requisition to the assigned requisition printer without any further prompts for printing. If the option is set to "False", when an ANTECH test is entered into the history of the patient and the user clicks "yes" to the option to create a requisition, they will then be presented with the prompt to print, preview, or cancel the printing of the requisition.

**1643 - AVImark Not Allowing Users to Manually Type in Reply Email Address**

Users will now be able to manually change the Reply To email address on the fly.

**702 – The "Help" Button Was Not Active in Several Areas of the Program****1541 - Duplicates in Document Management Window**

Clicking "Load All Codes" in the document management window, was creating duplicates.

**710 – Vetconnect - Spacing Problem When Previewing/Printing Results Report for Results With Extensive Notes**

When previewing/printing the Results Report for a result that has extensive notes, there was a spacing issue.

**3180 – IDEXXPacs - Unable to set Completed Request Back to Requested**

When the status of a shot has been marked complete or has actually been completed, the 'Set Status for Request to Requested' will now be greyed-out.

**1785 - Patient Lab Information Was Not Including Date Column in Excel****3188 - Certain IDEXX LabREXX Codes Were not Available for Selection in Create Requisition Window****888 - DICOM Information Not Retrieved Upon Undeleting Service**

Upon deleting and undeleting a service, with attached DICOM information, from Medical History or the Treatment List; the DICOM information was not retrieved with the undelete.

**4499 - VPO Uploader Using Fit To Instead of Crop To**

The VPO uploader will now use a Crop To option instead of Fit To.

**4373 - Large CubexTransactionFiles Caused Transaction Issues**

NOTE: If the clinic has a large XML, the size of the XML will not be reduced until a transaction takes place.

**1602 - ProImage Link in Dental Chart was not Opening Properly**

**MPS:**

**4242 - Right Click Choose- Stored Card Option not Showing**

Attempting to select a store credit card from the invoice window was not working.

**4510 - Dymo Receipt Printing Inappropriate for MPS Partial Payment**

The Dymo Receipt was being printed as soon as the type of payment is entered. Now it will not print until the patient is accepted.

**Patient Area:**

**3976 - Patient Lab Information Window Not Displaying All Tests**

The Patient Lab Information was being case sensitive as well as matching words.

**1578 - Changing Chart Term Added User Specific Value**

When the chart term was changed, from the patient chart window, there was a default value being added for the user logged in. This will now only happen if "Save Settings On Closed" is checked.

**3221 - Error Exporting Patient with Forms**

If a patient had a form on a medical history entry, the following error was displayed when exporting patients to the data safe: "Cannot open file "C:\2011.3 AVImark\MY FORMS\C:\2011.3 AVImark\MY FORMS\1\Fluffy\010512-1-1-FLUFFY.DOC". The filename, directory name, or volume label syntax is incorrect"

**2951 - Unable to Export Patient Using Email Option**

Attempting to export patient information using the email option would display the following error: "Could not delete file."

**817 - Forms Not Moved When Organized by Subdirectory and Moving Patient**

When organizing forms by "subfolder", upon moving a patient from one client to another, any forms attached to medical history entries of that patient were not redirected to the proper folder for the new location and thus can no longer be opened from medical history.

**2680 - New Photos Folder Being Created for Moved Patients**

When a patient is moved from one client to another, if there are no photos on the patient, a photos folder will not be created.

**4518 - Patient Chart Giving Assertion Failure with Tests Checked**

Printing the patient chart with Tests checked was causing the following error: "Assertion failure (E:\Amy\avimark\\_avi\uaviAnalyte.pas, line 231)"

**4549 - Results Containing Comments Only Causing Chart Error**

If a test in history had no number result and only a comment, the following error was displayed when trying to print a patient chart with tests checked: "" is not a valid floating point value."

**4312 - Underscore on Second Part of Name when Using Symbols**

When you use a character in a name, the & symbol for example, the CID was displaying an underscore.

**Reminders:****2486 - Postponed Reminders Importing Wrong Date**

When a reminder had been postponed on the sidekick, if the service was declined in medical history, after importing the reminder date was reverted back.

**3869 - Show in Vaccine History Not Working**

The option on the reminder template for "Show in Vaccine History" was not working. If this box was unchecked and the option "Show All Reminders" was set to False, this reminder was still showing in the vaccine history.

**Reports:****598 - Report Fields Were Duplicated on the Report Criteria Tab****599 - Month Of Not Shown on Report Criteria**

When searching for History Date, Month of, the date calculation was not being shown on the report criteria.

**3871 - Practice Analysis Patients by Species Incorrect**

The Patient by Species graph, in the Practice Analysis, was reporting the current information, instead of the information for the time frame selected.

**3386 - Tax by Location Was Not Working With Canadian Clinics****705 - Variance Report Not Including All Columns When Printed to Excel**

Printing the variance report to Excel the Original Quantity and the Change columns were not being displayed.

**3860 - Error Printing Account Summary to Excel**

Attempting to print the account summary to Excel was causing the following error and the report did not print: "Invalid class typecast".

**823 - Improper Prompt Concerning Email Text**

Upon attempting to send 1st and 2nd reminders via email; the below prompt was displayed; if there is not text in the 3rd reminder message window: Selected e-mail messages not found. Please enter (use E-Mail, Messages menu item).

**SQL:****3981 – SQL - Information Search Error Searching for Patient's Reminders and Last Visit**

When searching for patient's reminders and last visit in SQL, the following error was being displayed: "Invalid column name '\_Patient'. Invalid column name '\_Patient'."

**3268 – SQL - Locking Prompt When Running ChgAcctDate**

Attempting to run ChangeAccountDate in SQL was causing the following message: "This utility is unable to run due to the Account/History Locking feature. Account Locking was set by a System Administrator. Contact AVImark Technical Support at 877-838-9273 option 1 option 1 if you need assistance."

**3980 – SQL - Information Search to Verify Abaxis Results Giving Error**

Running a search for results coming over from the Abaxis machine was giving the following error: "Invalid column name '\_History'. Invalid column name '\_History'."

**2992 – SQL - Dental Checkbox Stayed Unchecked After Undeleting**

If a dental chart was attached to an entry that was undeleted in medical history, the Dental attachment was not being rechecked.

**Time Clock:****845 - Time Clock Entries Entered on Server Were Not Refreshed to Sidekick Without Rebuild****Treatment List:****890 - Labs Attached to Deleted Service Were Flagged with Rebuild**

Upon deleting a service, with Labs attached on the Laboratory Tab of the Change Treatment window, from the Treatment List and then rebuilding indexes; users received the following alerts concerning those labs, "Lab, record number #: Lab has no associated treatment".

**1726 - Total Price Reflecting Discount**

The Total Price, on the grouped entries tab, will now show the non-discounted price, no matter what the discount classes are set to.

**743 - Last Sold Column of Undelete Treatments Window Was Not Reporting Correctly****2291 - Not Found in Treatment Associations When Moving Treatment to Inventory**

If a treatment group had a treatment attached, and if the category the child code was moved to the inventory list the description on the parent code was being changed to not found.

**3983 - List Index Out of Bounds -1 Adding Associated Entries**

Adding an associated entry to more than one treatment consecutively was causing the following error: "List index out of bounds (-1)"

**4153 - Undeleting an Entry Was Not Bringing Information Back to Labs Tab****3271 - AVImark Search Field Not Displaying Appropriate Selections**

Searching for a test selection in the Change Treatment, Change Lab window was not correctly displaying the selections.

**3150 - Refresh Issue in Lab Association Window**

When selecting Import Treatments > Associate IDEXX Lab Services (in the Treatment List), and clicking the Code Column to sort the list by code, codes were appearing as duplicates.

**4409 - Remind As Already Selected When Creating New Treatment, Item, or Diagnosis**

When creating a new treatment, item or diagnosis, there were entries automatically added to the remind as tab.

**Users and Security:****3886 - ACT07 Working Differently**

With ACT07 secured, a non-authorized user will be able to open the Change Transaction window, but will not be able to make changes.

**1217 - ADM33 Change Dental Charts Not Working Correctly**

When ADM33 is secured, a Non-Authorized user will be allowed to make a new Dental Chart, but they will not be allowed to make changes to an existing Dental Chart.

**818 - Security Function EST08 (Change Patient Estimate Amounts) Did Not Work Correctly**

When the security function EST08 (Change Patient Estimate Amounts) was secured, users were receiving an Allow Access window when attempting to add a new entry to an estimate, even without changing the price.

**781 - Security Functions MED18 & MED19 Not Working Correctly When Used on Two Separate Categories****Utility Programs:****4105 - ChangeAccountDate Allowed User with No Authority to Make Changes**

Users that were not authorized ACT07 were able to run ChangeAccountDate.

**4045 - Error Running RatingClients in Client Server**

If the AVImarkServer, attempting to run RatingClients was causing the following error: "" is not a valid integer value."

**4279 - Need Email Field in PCI Form**

An email field has been added to the PCI form. When this email address is updated, the email address in the Change User window will also be updated.

**4489 - ADD2CLI Copying Incorrect Year**

The ADD2CLI utility was copying the wrong year.

**4471 - RabiesCSV for Cook County has Extra Spaces**

The RabiesCSV for Cook County had extra spaces, causing the report to be rejected.

**Whiteboard:****1247 - Setting Repeat to Whiteboard Entry and Unchecking "Use Current Price" Caused Entries to Have the Wrong Amount****740 - Unable to Drag and Drop Certain Whiteboard Entries**

Upon posting services to the Whiteboard; users were unable to drag and drop certain entries within the "Patient Activities" area of the "Checked-in" tab.

**808 - C/S: Error when setting repeat on a whiteboard activity that has more stuff**

When adding an item with a repeat to the whiteboard, the following error was displayed: "Error. Record, Whiteboard Activity More Stuff, record number, -1, record state, New. Attempt to load invalid record number."