



**AVImark<sup>®</sup>**  
**Abaxis VetScan<sup>®</sup> VS2**

VERSION 2013.1 AND HIGHER

## Abaxis VetScan VS2



The Abaxis VetScan VS2 comes with a CD; this must be installed before connecting to the computer. If you are unsure if this has been done or need assistance installing it, please contact Abaxis Support at 800-822-2947.

## AVImark Setup

From the AVImark workstation used for communication:

1. From the **Services** menu on the CID, select **Instrument Management** to open the Instruments window.
2. Open a new Instrument Setup window using a **right-click | New**.
3. Select **Abaxis VetScan VS2** from the available drop-down list. The **Name**, **Computer ID**, and **Protocol** should automatically be populated with the proper information once the instrument has been selected.
4. Place a check in the **Active** box, if not already defaulted to being checked.

A screenshot of the 'Instrument Setup' dialog box. The dialog has a title bar with 'Instrument Setup' and a close button. It contains several fields: 'Type' is a dropdown menu set to 'Abaxis VetScan VS2'; 'Version' is a spinner box set to '1'; 'Name' is a text box containing 'Abaxis VetScan VS2'; 'Computer ID' is a text box containing 'LAB' with a yellow highlight, and a checked checkbox labeled 'Active'; 'Protocol' is a dropdown menu set to 'Serial'. At the bottom, there are four buttons: 'Back', 'Next', 'Cancel', and 'Finish'.

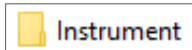
5. Click **Next** and choose the appropriate Com Port. The Baud Rate should be set to **9600**.
6. Click **Finish** to complete the instrument setup.

# Abaxis VetScan<sup>®</sup> VS2

A storage folder to receive the results from the VS2 is needed. This folder can be created inside the AVImark folder on the server. Once this storage folder is created, the path must be defined within the **Hospital Setup | Advanced Options | Save Lab Instrument Results To**.



**This folder name cannot contain spaces. We recommend a folder named “Instrument” as shown here:**

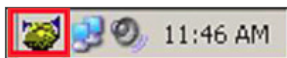


Assign your instrument rotor(s) under the Labs tab of the appropriate AVImark treatments:

1. In the Treatment List, **right-click** on the desired treatment and select **Change**.
2. Select the **Laboratory** tab, then click on the **Labs** sub-tab.
3. **Right-click | New**.
  - Select Abaxis Instrument from **Lab Company** drop-down list.
  - Select Abaxis VS2 from **Machine** drop-down list.
  - Select appropriate Rotor from **Rotor** drop-down list.
4. Click **OK**.

The Instrument Import utility is much the same as in previous AVImark versions.

- The utility can be found by accessing **Services | Run Instrument Import**.
- This utility is now set up to automatically start when AVImark starts, and has the option to Close on AVImark shutdown.
- When AVImark opens you will see the **shaking hands** icon located in the System Tray of the workstation. This indicates AVImark is in communication with the instrument(s) assigned to communication ports on this computer, and is “listening” on each port for any incoming data.



- The options to Start when AVImark opens, and Close on AVImark shutdown can be controlled by right-click options on the icon in the System Tray.



If you have de-selected the Close on AVImark shutdown option, please note you will need to manually close the connection utility prior to index rebuilding or any other maintenance utility that requires exclusive access to AVImark files. Once the instrument is properly assigned in Hospital Setup, and associated to the AVImark treatment(s), your setup is complete.

The Instrument Import Utility (the shaking hands icon) needs to be closed and reopened at the start of each new day before processing samples. This renews the two-day window of opportunity for an automatic import.

Close and reopen the Instrument Import Utility any time the comport becomes inactive. This can happen when disconnecting the USB to move the machine around or to clean pet hair from around the devices. It can also happen when the analyzer is powered off and back on.

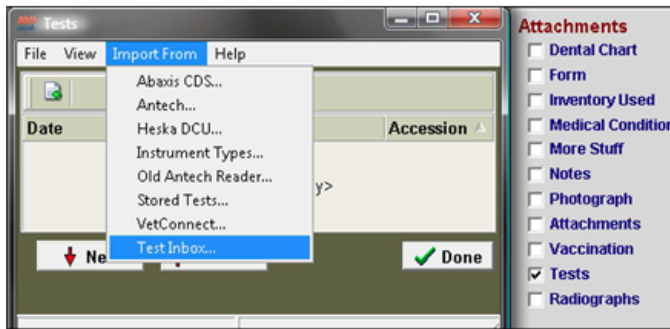
## Use

When a treatment is entered into Medical History for a patient with an instrument assignment, AVImark will start listening to the ports in which the associated instruments are assigned for results. As results are ready to be transmitted, AVImark will import the results to the proper Medical History entry. If the proper Medical History cannot be located, the results will be sent to the new **Test Inbox** to await manual import.

- The import utility looks for a patient with a record number that matches the **Patient ID** field received from the instrument.
- The Patient ID being searched for a match is the AVImark Patient ID. To keep this ID displayed on the AVImark CID, go into the **Hospital Setup | Advanced | Advanced Options | Display Patient Record Number** and set it to **True**.
- When running the test on the designated analyzer, and prompted for a patient identifier, the AVImark Patient ID is the number which will allow the utility to make the proper patient association for an automatic result import.
- If this is successful, the recent medical history of the patient is searched for a recorded treatment set to store results from the instrument.
- Once the patient identifier is located on the incoming results, the utility will begin searching for a Medical History entry for the patient awaiting results.

# Abaxis VetScan® VS2

- When the Medical History entry is located, the results will be automatically imported into the Tests Attachment area.
- If the Patient ID doesn't match or exist, or there is no matching Medical History entry on the patient awaiting results, the test results are placed in the **Test Inbox**.



- To manually import results sent to the Test Inbox, highlight the Medical History entry, select the **Tests** attachment | **Import From** | **Test Inbox**. Here you will be presented with a list of results transmitted from instruments that did not find the Medical History entry to complete the automatic import. Select the set of results to import to this history entry, and click **Done**.
- As an additional safety measure to ensure no results are lost, an RX\$ file is also created with the transmitted results. This RX\$ file is sent to the user defined Instruments storage folder.
- Results can be imported from this location, if needed, by opening the **Tests** attachment. Select **Import From** | **Stored Tests**. This will display all stored RX\$ files on the left pane. You can select the RX\$ file that holds the test, move to the right pane, select the test then **right-click** | **Import Test**.
- In the case of an emergency, where access to results are immediately needed, **right-click** on the treatment in Medical History that has the lab instrument association which represents the test instrument being used. Select **Import Results**. This will open the Associated Instruments window displaying a list of associated instruments for this treatment. Place a check in the box that represents the instrument to receive results. Click the **Import Results** button. AVImark will begin listening to these ports. As the data is sent from the instrument via the port, AVImark will capture and place it immediately in the Test Results window. After the results are received, the Import Results window will disappear, and you can view the results by selecting the Tests attachment option for that Medical History entry.

# Abaxis VetScan<sup>®</sup> VS2



To alleviate the chance of sending results automatically to the wrong Medical History record that may also meet the requirements for automatic import selection, we have incorporated a two day time frame to use for searching then selecting the oldest entry in that time frame for which these results would apply, to make the result attachment.

To summarize, the utility will look for that patient record, then start at the farthest date/time as dictated by the two day time frame, and apply it to the first one it finds, versus starting with the most recent and looking back.

---