



# Heska DCU (Data Capture Utility) version 2010 and Higher



855-478-7920 | 304 Ohio St. | Oshkosh, WI 54902  
Revised July 10, 2019

# Table of Contents

Heska DCU .....	3
Installation .....	3
Setup .....	3
AVImark Setup.....	4
Importing Test Results .....	5
Viewing Results.....	6

# Heska DCU

AVImark now has the ability to retrieve lab results via the Heska DCU. This new interface will allow the capture and subsequent storage of results from several Heska instruments. AVImark users have been able to retrieve results from the Heska Spotchem EZ and Heska CBC Diff for quite some time using the straight serial interface. However, with the DCU interface you will now be able to utilize results from these instruments as well as the following:

DRI-CHEM@ 7000

DRI-CHEM@ 4000

HemaTrue@

## Installation

Your Heska Representative will install your Heska DCU software and configure your analyzers.

## Setup

Setup will occur in two places:

1. Heska DCU software
2. AVImark software



*These setup steps will only need to be completed once.*

---

Heska analyzers can be configured to transmit results to a user specified storage folder in an XML format. You can create this storage folder in any accessible location on your clinic's network. You will need to assign this folder location in the Heska DCU software as well as AVImark.



*In this example, we have created a folder named Heska within the AVImark folder. Its directory path is \\Server\AVImark\Heska. This will serve as the analyzer Output Folder.*

---

## Heska DCU Setup:

1. Open the Heska DCU by clicking on it in your System Tray.



2. Select **Preferences**.
3. Next to the Output Folder field, click on the ellipsis (three dots) to browse to the location of the storage folder you created.

Your Output Folder path should be similar to this:

4. Check the option for "Copy Reference Range Data Folder to Output Folder".
5. Click **OK**

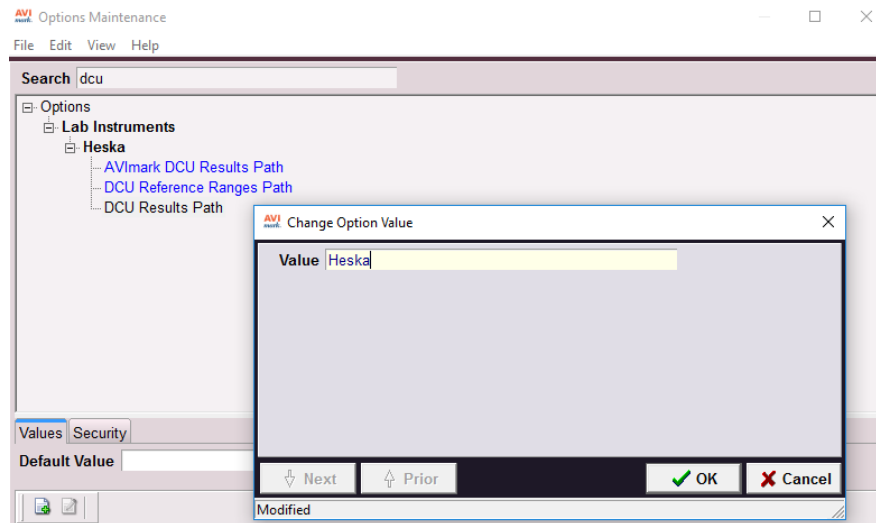
## AVImark Setup

In order to retrieve results using the Heska DCU interface, you will need to assign the following directory locations within AVImark:

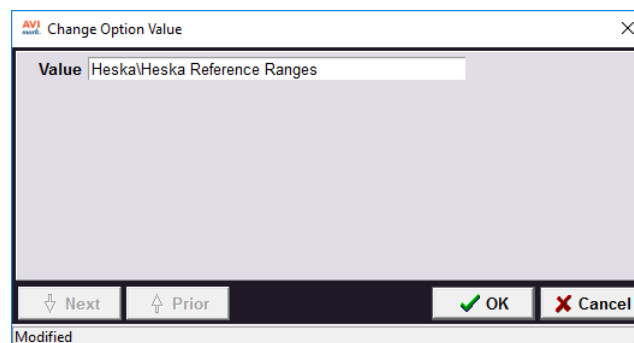
1. Analyzer Results (DCU Results Path).
2. Reference Ranges (DCU Reference Ranges Path).
3. Location for Analyzer Results Storage once they have been imported. (AVImark DCU Results Path).

In AVImark:

1. Click **Work with | Hospital Setup | Advanced | Advanced Options**.
2. In the **Search** field, type "DCU" (not case sensitive).
3. Click **DCU Results Path**.
4. Click **Change** (to the right of the Default Value field) Enter the location as set for the DCU Output Folder.
5. Click **OK**.

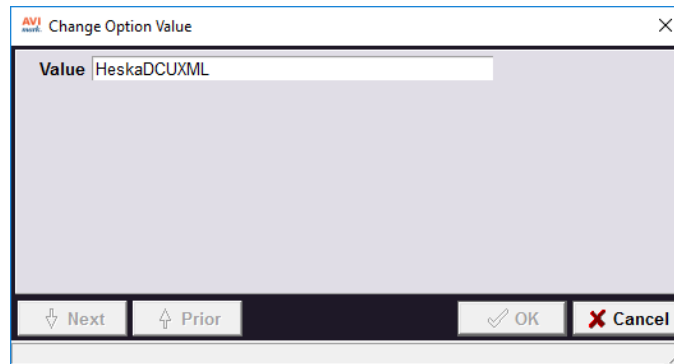


6. Next, click **DCU Reference Ranges Path**.
7. Click **Change**.
8. Modify the directory path as set for the DCU Output Folder to include **\Heska Reference Ranges** at the end of the path.



9. Click **OK**.
10. Finally, click **AVImark DCU Results Path**.

11. Click **Change**.
12. Set the directory path where the result XML is to be moved after importing to the patient record.



- o This will keep the DCU Results folder from displaying results that have already been imported.
  - o Once imported to a patient record, the result XML file will be moved out of the DCU folder and into the AVImark DCU Results folder.
  - o This will be a user defined folder and can be placed in the AVImark folder. o In this example, the folder is named "Stored DCU Results":
13. Click **OK**.
  14. Click **Done**.

Once results have been transmitted to the specified folder, you are now ready to import results.

## Importing Test Results

1. In the Client Information Display, select the patient's Medical History record in which you wish to import results.
2. With the treatment code highlighted, select **Tests** under **Attachments**.
3. In the Test window, click on **Import From | HeskaDCU**.

This will launch the Heska DCU window with the test files located on the left side of the screen.

4. Select the line that represents the test that you want to import into the patient's record.
5. **Right-click | Import | Test**.
6. Import the results.

The results will be received in any value, type, and with any notes or comments as they are sent from the lab/instrument, as well as display the normal range as dictated by the lab or instrument at the time the test was completed.

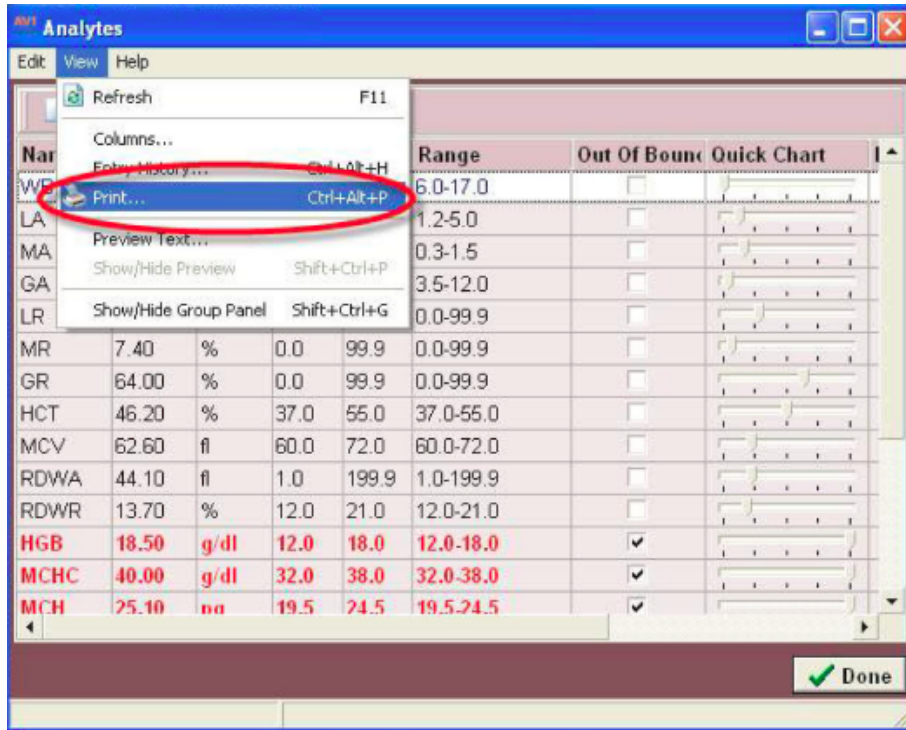
7. The results will be permanently associated to this AVImark Medical History entry.
8. Once imported you will be able to open, view, print, and graph the results at any time


## Viewing Results

1. To view results at any time, select the Medical History entry, then select the Tests checkbox.
2. You can select the entry in the Tests window that represents the set of results you wish to view, and double-click to open the Analytes window.

In this window you will see the Analyte Name, Result, Measure (units), Low Value, High Value, as well as a "Quick Chart" indicating where the result value falls in comparison to the High- Low range.

You may Print, or Preview the Result by clicking **View | Print**:



 We have also added the ability to delete any XML file desired from within the Heska DCU import window at any time. Select the XML file you wish to delete. **Right-click | Delete.**