



Setting Up An AVImark Client Server



855-478-7920 | 304 Ohio St. | Oshkosh, WI 54902
Revised July 15, 2019

Table of Contents

Client Server: Explanation and Benefits	3
Making the Switch from AVImark Classic to Client/Server.....	4

Client Server: Explanation and Benefits

As of AVImark version 2008, you now have the option of running AVImark through Client/Server. This option allows AVImark to access the data files in a more direct way asking for larger sets of information instead of the previous method that had more requests for smaller sets of information causing undue slowness for some clinics because of network traffic generated. It also allows all of the workstations to talk to the AVImark server service which will get the information from the server which helps to eliminate file locking errors. As of 2018 versions of AVImark, this change is mandatory.

Using the Client/Server application can be defined as:

- ✓ Client — Avimark.exe [program]
- ✓ Server — AVImarkserver.exe [Application program]
- ✓ AVImarkGuardian.exe [Service program]

These files will be inactive until you switch to using Client/Server.

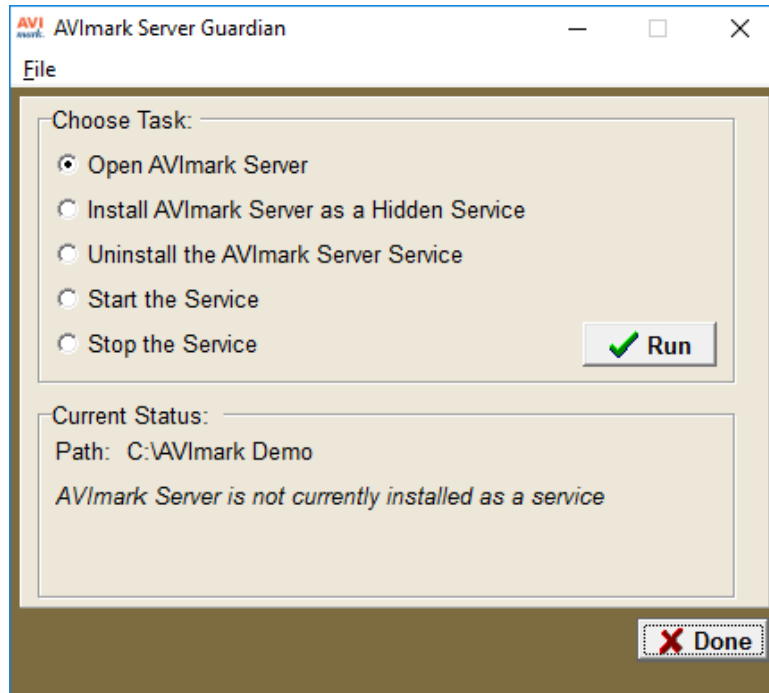
The main change you will notice when using the Client/Server feature is the new AVImarkGuardian program. The AVImarkGuardian is an executable program that will run in the background on your server to allow AvimarkServer.exe to be run as a Service. It can be set up to start with Windows and can be thought of as a "controller" to control the AVImarkServer.exe file.

A new shortcut, AVImarkGuardain.exe, will need to be created on the Server. In addition to using Client/Server on your local network, you can also connect to AVImark through the internet.

If you run more than one active database and wish both to run Client/Server, you will need to contact AVImark Technical Support to set up the second database.

Making the Switch from AVImark Classic to Client/Server

1. Open your AVImark folder on the server, locate the file **AVImarkGuardian.exe**, right-click on it, and click **Send to > Desktop (Create Shortcut.)**
2. On the Shortcut to AVImark Guardian, right-click | **Run as Administrator**. The AVImark Server Guardian window opens.



3. Click **Open AVImark Server** and click **Run**.
4. At the top, click on **File | Options**. Set a four digit password and leave the port to **9191** then click **Done**.
5. Close the AVImark server window and, in the AVImark Server Guardian window, choose **Install AVImark as a Hidden Service** and click **Run**. The message at the bottom will change once this is completed to, "AVImark Server is currently running as a service."

 **If the message at the bottom displays, "AVImark Server is installed as a service, but is not currently running," click *Start the Service*, and click *Run*.**

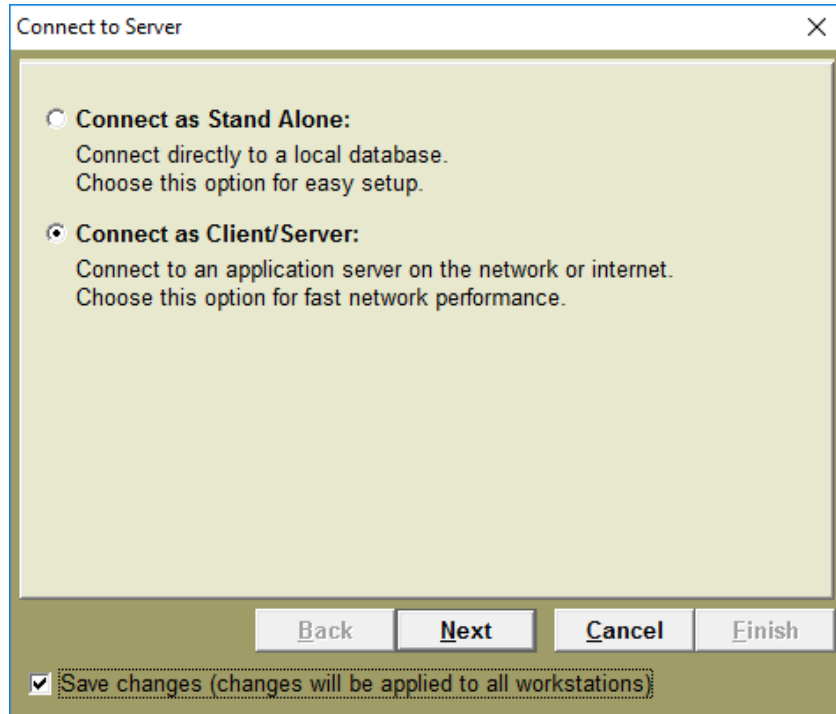
6. Click **Done** on the Guardian window.
7. (optional) If double-clicking on the avimark.exe icon does not connect you to the server window, try connecting this way:

On the AVImark Shortcut, right-click | **Properties**. At the end of the **Target** field (after the .exe) add a **space** then type **/connect** (see the image below for an example). Click **Apply** and then **OK**.

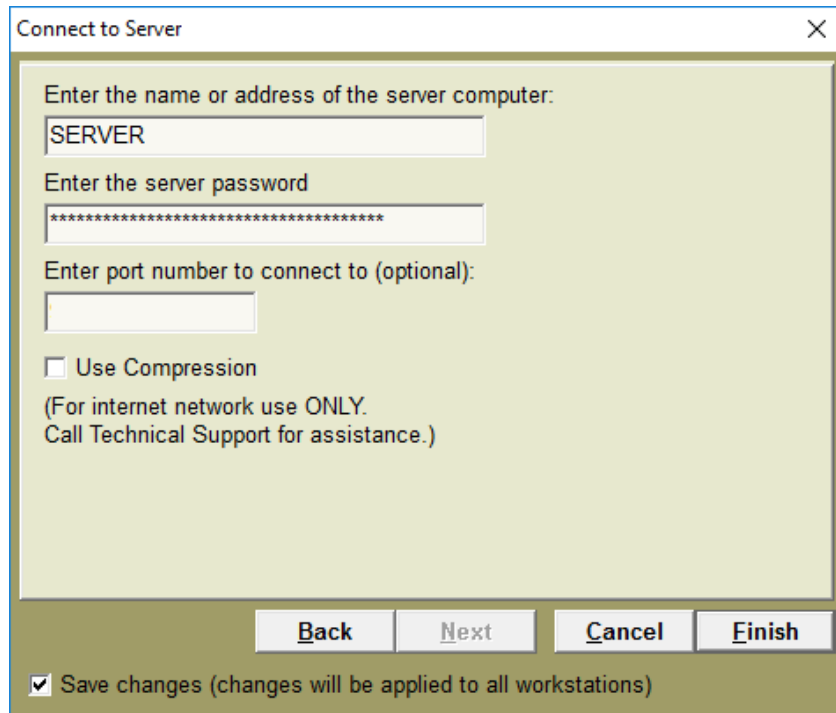
Target type: Application
Target location: AVImark Demo
Target:

 **When finished installing Client Server, you will remove the */connect* from the properties.**

8. Open **AVImark**.
9. The screen below should open. Click **Connect as Client/Server** and check the option to **Save Changes**, and click **Next**. (Save changes will make this option global so all your other computers will connect this way. Without this option checked only this computer will connect this way for this log on only.)



10. The next screen provides the fields to enter in the server name, password, and port number.



- a. **Name or address** of the computer should be the server's full name or the IP address of the server.



Only use the IP address for the address box if the server has a static IP.

- b. The **server password** is a password created by AVImark for additional security. You should not have to change this option unless you changed the AVImark server password.
- c. The port number is defaulted to 9191 unless you have changed the AVImark server port. You should **leave this option blank**.
- d. **Use Compression** should remain unchecked unless you are primarily accessing AVImark through the internet instead of on a local network or if you use wireless on most of your workstations.



If you use a firewall, you will need to make sure the AVImarkserver.exe and avimark.exe are excluded from the firewall. Also, the designated port number is unblocked on the firewall. If you need help setting up your firewall, contact AVImark Support.



Several functions previously located in the Utilities menu have been moved and must be accessed through the AVImark Guardian. To access these options: rebuild indexes, backup AVImark files, updateAVImark, Sidekick, and Apply Reminders. You will close AVImark on all computers and the server then double-click on AVImark Guardian and click Run. Click Utilities and make your selection.

- 11. E-mail Support@AVImark.net letting us know your clinic name, phone number, and that you switched to AVImark Client/Server.

This is important because Tech Support is keeping track of our users on Client/Server. This enables us to track improvements in speed-related problems and make sure if any Client/Server-specific issues were ever to arise, we would be able to contact you quickly via e-mail.